



ZIMBABWE **MINING SUPPLIERS** **DIRECTORY**

2019 / 2020

BUYERS' GUIDE FOR THE MINING INDUSTRY



E N G I N E E R E D W I T H P U R P O S E

The **BOVA RANGE** enables you to correctly select protection for a broad spectrum of personnel, from on-site business execs to miners deep underground and virtually every work place in between. Specialised technologies ensure specific safety for various industries. In this way, workers' safety is never compromised and spend is expertly utilised.

No matter your terrain, we have the exact footwear engineered to overcome it.



LIGHTWEAR | HEAVYWEAR
EXTREMEWEAR | PARAMILITARY

www.bova.co.za



Whilst there are several companies in South Africa that carry parts for diesel engines, only EHD Components carries such a vast range of diesel engine parts. We cater for the widest range of diesel engine models in the country and our 6,000m² head office and warehouse in Johannesburg carries in excess of 72,000 product line items!

Together with our branches in Durban, Cape Town and Bloemfontein, and our business partners in Namibia; Mozambique; Botswana; Zambia and Zimbabwe, we are well placed to service the entire Southern African (SADC) region as well as customers further afield and in the UK and Europe.

Our relationship with suppliers and manufacturers across the globe spans many years; some as far back as 1953. The directors' visits to suppliers' offices and factories, as well as to international trade shows and exhibitions, such as Auto Mechanika, ensures their ongoing support both in our day-to-day trading and also in the event of any product claims.

EHD is constantly researching and developing new markets and in many instances this research has prompted EHD's suppliers to improve their products or extend their ranges.

EHD is the sole distributor of the *Premium Plus* range of products, including the engine models preferred by the Namibian government for their rural water and power projects- as well as a series of generators.

The range of heavy duty diesel engine replacement parts that we carry are suitable for a wide range of makes and models for all applications, including ADE; Case; Caterpillar; Cummins; DAF; Deutz; ERF; GM Detroit; Fiat; Ford; Gardner; Hatz; Hino (Toyota); International; Isuzu; Iveco; John Deere; Komatsu; Leyland; Lister; Mack; MAN; Massey Ferguson; Mercedes; Mitsubishi; Neuss; Nissan; Perkins; Petter; Renault; RVI (Berliet); Scania; Tata and Volvo.

- Engines, for vehicles as well as stationary applications such as generators and pumps.
- Generator Sets:
 - from 2kVA to 300kVA – standard stock items
 - over 300kVA to 1000kVA - manufactured to order
- Light Agricultural & Construction Equipment such as water pumps; high pressure washers; compactors; rollers; welding machines and compressors.
- EHD uses the robust and reliable Unibase system which is designed to meet the needs of the vehicle after-market and parts industry- from quoting to managing of accounts. In due course, qualifying customers will be granted access to our intranet catalogue.

Our experienced Sales staff and our professional after-sales and technical support ensure that customers in our unique market receive the best possible service.

Our staff are all fully aware of the importance of good service and customer relations. They constantly strive to improve their individual abilities and performance in their fields of responsibility, and benefit from ongoing training.

Together we strive to offer our customers the best possible products and service, at the best possible price, and to build and maintain mutually beneficial long-term business relationships.

Johannesburg Head Office
Tel: 011 870 5000
Fax: 011 836 0474
ehd@ehd.co.za

EHD House
Cnr. Hubert & Marshall St
Marshalltown Johannesburg 2001

e hd

COMPONENTS 2005

(PTY) LTD

t/a ENGINE & HEAVY DUTY COMPONENTS

⊕ AGRICULTURAL ⊕ CONSTRUCTION ⊕ MINING ⊕ TRANSPORTATION ⊕



www.ehd.co.za

HEAVY DUTY DIESEL ENGINE REPLACEMENT PARTS SUITABLE FOR:

ADE
CASE
CATERPILLAR
CUMMINS
DAF
DEUTZ
DONG FENG
FIAT
FORD
GARDNER

GM DETROIT
HATZ
HINO (TOYOTA)
INTERNATIONAL
ISUZU
IVECO
JOHN DEERE
KOMATSU
LEYLAND

LISTER
MACK
MAN
MASSEY FERGUSON
MERCEDES
MITSUBISHI
NEUSS
NISSAN
PERKINS

PETTER
RENAULT
RICARDO
RVI
SCANIA
SDEC
TATA
VOLVO
YANG DONG
WEICHAI

Johannesburg Head Office

Tel: 011 870 5000

Fax: 011 836 0474

ehd@ehd.co.za

EHD House

Cnr. Hubert & Marshall St

Marshalltown Johannesburg 2001

Manufacturer's names, numbers, symbols, photos and descriptions are used for reference purposes only and it is not implied that the parts referred to are the products of those manufacturers. Warranty conditions are available on our website www.ehd.co.za

Company Profile — Geobrugg

Geobrugg – High-Tensile Steel Wire Nets for Increased Safety

Safety is our nature - true to this philosophy, Geobrugg develops and manufactures protection systems made of high-tensile steel wire. These systems protect against natural hazards such as rockfall, landslides, debris flow and avalanches. They ensure safety in mining and tunneling, as well as on motorsport tracks and stop other impacts from falling or flying objects. More than 65 years of experience and close collaboration with research institutes and universities make Geobrugg a pioneer and leading expert in these fields.

Geobrugg has 340 specialists worldwide, production facilities on four continents, as well as branches and partners in over 50 countries. This proximity allows us, to ensure customers quick project implementation with a range of services that includes: needs assessments, consulting, design, testing and system installation. Geobrugg operates as an independent corporation within the Brugg Group, and is headquartered in Romanshorn, Switzerland.

Areas of Application

Rockfall Protection: Geobrugg rockfall protection barriers are able to withstand impact energies of up to 10,000 kJ – this represents world record!

Slope Stabilization: Netting and meshes are anchored with rock nails and spike plates to actively secure surfaces. The mesh is nearly invisible and facilitates the sustainable revegetation.

Shallow Landslide and Debris Flow Protection: Geobrugg's special solutions ensure particularly efficient and sustainable protection against these natural hazards.

Avalanche Prevention: Geobrugg's flexible protection system reliably retains large volumes of snow. During snow-free periods it also provides effective protection against minor rockfall impacts.

Mining / Tunnels: Meshes and protection systems from Geobrugg are an important safety and efficiency factor in opencast and underground mining as well as in tunnels worldwide: people, machines and infrastructure are also protected in geologically and seismically critical zones. This aids in avoiding work interruptions.

Motorsport Solutions: These solutions can be found on regional and world-renowned race tracks and offer maximum spectator protection. Thanks to the broad spectrum of FIA homologated and accepted motorsport barriers and fences, Geobrugg always offers the optimal solutions to its customers.

Impact Protection: In this area, special solutions are developed in combination with high-tensile steel wire nets that reliably stop flying debris or accelerated objects of all kinds.

MINING

GfG (Pty) Ltd

VAT REGISTRATION NUMBER : 4140110612

PHYSICAL ADDRESS:
7 VOORTREKKER ROAD
MINDALORE NORTH
KRUGERSDORP
1739

CONTACT DETAILS
TEL: 011 955 4862
FAX: 011 955 4741
E-Mail: info@gfg.co.za
Website: www.gfg.biz

GfG (Pty)Ltd is an acknowledged major world player in the development and sales of personal gas detection instrumentation and fixed gas detection systems.

Our range of products include:

- single- and multi-gas detectors (for oxygen, combustible and toxic gases, and vapours)
- gas leak detectors
- sound level meters
- anemometers
- fixed system controllers and transmitters (for oxygen, combustible and toxic gases and vapours)
- stand-alone systems

natsu
FLOTATION OPTIMISATION

NatSu Africa PBC
23 Marlborough Drive, Marlborough, Harare, Zimbabwe
+27 82 800 4435

WeChat: Gregkruger
Skype: gregkruger1
greg@natsusolutions.com
www.natsusolutions.com

NatSu is a Zimbabwean Company that partners with its clients to maximise their bottom line by providing a complete unique flotation solution for unique challenges. No ore type or mineral too difficult. ▪ manufacture own chemicals ▪ independent testwork ▪ process improvements ▪ plant optimization ▪ improve working capital ▪ Products include: frothers, collectors: primary and secondary, depressants, Ph modifiers and flocculants

KOMATSU



Providing quality and reliable products, service and solutions to the underground mining industry.

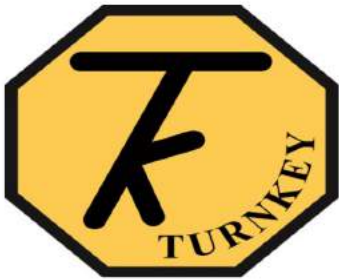
Komatsu is an indispensable partner to the mining industry that maximizes value for customers through innovative solutions. With a full line of products we help customers safely and sustainably optimize their operations. Our Komatsu, P&H, Joy and Montabert equipment and services are used to extract fundamental minerals and develop modern infrastructure.

12 Commercial road, Wadeville, Germiston, South Africa
+27 11 872 4000 | info@joyglobal.com



www.mining.komatsu

Trademarks and service marks used herein are the property of Komatsu Ltd., Komatsu Mining Corp., or their respective owners or licensees.



Unit G4, Pinelands Office,
Maxwell Drive,
Modderfontein,
1645
Tel: [011 608 4537](tel:0116084537) |
Fax: [086 698 6380](tel:0866986380)
www.turnkeyinstruments.co.za

Turnkey Instruments was established in 1997 and offer to the mining and transport sector:
Quality brake testing instrumentation (SIMRET brake testers)
Southern Africa's leading brake testing services
On site consulting
Sole agents in Africa
Only calibration lab in Africa



Adroitly Africa

303c Olievenhout Ave,
North Riding AH,
Roodepoort,
2169
Email: info@adroitlyafrica.com
Tel : [+27 10 003 1638](tel:+27100031638)
www.adroitlyafrica.com

Adroit EMS, Adroit SCADA, Adroit HMI, Adroit SCADA Intelligence, Adroit information portal, Adroit OEM platform, Adroit alarm management, Codra Panorama Historian, HNC Electric Softstarters, CBI low voltage switchgear, Mitsubishi PLC's, Mitsubishi VSD's, Mitsubishi HMI's, Dell hardware, Product training and support, Product engineering support.



 **MITSUBISHI
ELECTRIC**
FACTORY AUTOMATION

SCADA, PLC's, VSD's and Servo's

Right quality, right price, right service and right availability

Tel : [+27 10 003 1638](tel:+27100031638) | Web : www.adroitlyafrica.com | Email : info@adroitlyafrica.com

OUR GUMBOOT HERITAGE RUNS DEEP

Wayne products have established themselves as iconic companions in the mining industry, offering hardwearing protection in Africa for even the harshest conditions over almost 8 decades.

We're the largest manufacturer of PVC and PU gumboots in Africa, with over 64 million gumboots having rolled off our production line. If these were to be lined up from heel to toe, they would stretch halfway around the world.

With a comprehensive range of products, offering a variety of safety features, colours, lengths and cuts, Wayne has a gumboot solution to fit your specific needs.



To find your nearest
stockist please email us
at info@bbfsafety.com

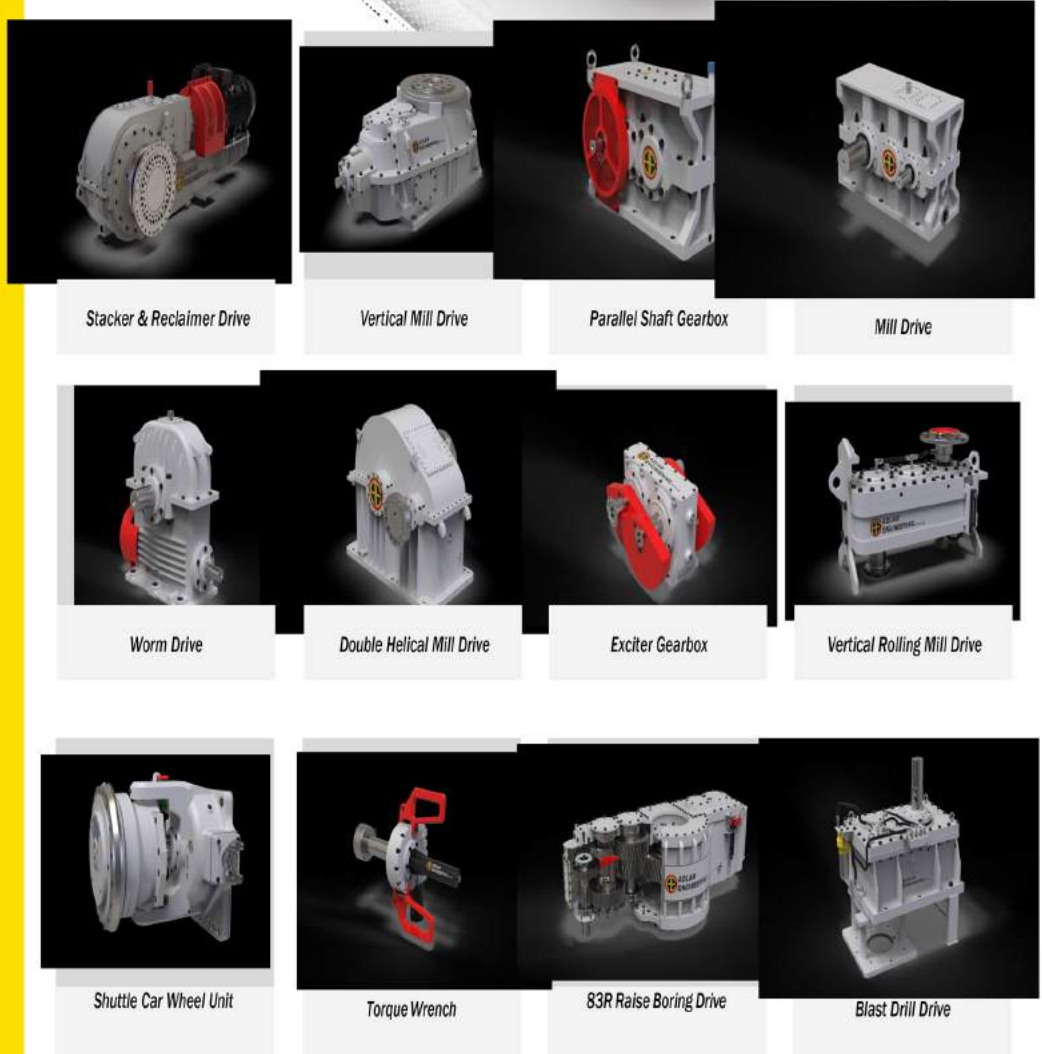
Featured Boots: Wayne Egoli 1 and Egoli 2

To view our comprehensive
range please visit,
www.wayne-safety.com

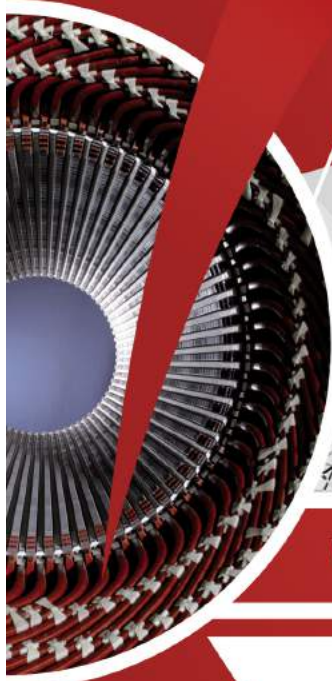


Services

-  **Custom Build Gear drives**
-  **Gearbox Overhauls, upgrades and re-builds**
-  **Consultations & Inspections**
-  **Field Service & Gearbox Installations**
-  **Replacement Parts**
-  **24 Hour Support**
-  **Flexible in-house Manufacturing Capabilities**
-  **Over 40 Years experience in manufacturing**



Your technology solutions provider!



Wilec Brands, Manufactured and Supplied in Africa for Africa



Quality bearings manufactured for the mining industry



Industrial tapes manufactured for all industries



Winding wires manufactured to SABS and IEC Quality Standards

PRODUCT RANGE

MECHANICAL

- Bearings
- Plummer Blocks
- Chains
- Seals

ELECTRICAL

- Enamel & Covered Conductors
- Insulation Materials
- Process & Test Equipment
- Resin & Varnishes
- Transformer Products

INDUSTRIAL

- Signage & Graphics
- Extension Reels
- Tapes



A division of ACTOM (Pty) Ltd

08611WILEC

exportsales@wilec.co.za
www.wilec.co.za



Your Hardware Home!

Zimbabwe Official Distributor

00263 (4) 751114/7
0263 77 4036 287
marketing@powerspeed.co.zw



GLOBAL WHEEL (PTY) LTD

MANUFACTURER AND SUPPLIER
OF STEEL AND ALLOY WHEELS





WELCOME TO GLOBAL WHEEL

Global Wheel (Pty) Ltd is undisputedly South Africa's, if not Africa's leading manufacturer of STEEL WHEELS/RIMS for trucks and trailers working in Mining, Construction, Commercial, Agricultural and Military.

Up until October 2012, Global Wheel (Pty) Ltd formed part of a global network of 15 related companies spearheaded by OTR Wheel Engineering Inc. (USA). As of 31 September 2012, Global Wheel (Pty) Ltd was acquired by a consortium consisting of: Management, Tamela Holdings (Pty) Ltd and the National Empowerment Fund (NEF), a division within the South African Department of Trade and Industry (DTI)

Global Wheel (Pty) Ltd has 79.25% black ownership, the company far exceeds the South African Mining Charters minimal requirement of 25.1% black ownership. In terms of industry support towards Black Broad Based Employment Equity (BBBEE), Global Wheel (Pty) Ltd also ranks high as a "Level 4" contributor.



MILITARY /INDUSTRIAL.

Global Wheel (Pty) Ltd is, and has been for the past 20 years, a world renowned manufacturer of high quality two-piece bolt-together MILITARY steel and aluminum rims/wheels.

The quality of our products and their reliability is well known to market leaders such as BAE Land Systems, Oshkosk, RSD, Reva ICP and Paramount Group.

Over the past 7 years, and 80 000 rims later, Global Wheel (Pty) Ltd has supported passive applications to defence forces around the world. The undeniable and irrefutable quality and reliability of our products remains a hallmark of who we are. This is further reinforced by the fact that in this particular arena there has not been a single record of incident to speak of.



AGRICULTURAL.

(tractors, trailers, harvesters, implements and irrigation)

Global Wheel (Pty) Ltd has a wide selection of AGRICULTURAL rims ranging from 16 inch through to 54 inch.





COMMERCIAL.
(trucks, trailer and busses)

Global Wheel (Pty) has a complete range of products ranging from multi-piece 15 inch rims through to a tubeless 22.5 inch rims in forged aluminum and /or steel. The variables thereof are numerous depending on the vehicles application, color, stud quantity and stud verses spigot mount.





INDUSTRY SOLUTIONS

MINING & CONSTRUCTION.

Global Wheel (Pty) Ltd has a strong presence at most major mining sites throughout Southern Africa. This has come about through alliances and/or tender contracts. Global Wheel (Pty) Ltd has an OEM compatible and /or approved solution for ALL vehicles currently in operation.

All rims manufactured and supplied by Global Wheel (Pty) Ltd are accompanied with a "Certificate of Conformance" , thus warranting the materials used , the workmanship and the application.



UNDERGROUND:

(dump trucks, loaders /scoops and shuttles)

20 inch through to 33 inch...

ATLAS COPO. (Wagner MT & ST Series)

AARD MINING.

BELL EQUIPMENT.

BIRD MACHINES.

CATERPILLAR.

FERMEL. (T-Mech)

GHH MINING.

JOY MINING.

SANDVIK. (Toro, EJC, LH & TH Series)

SURFACE MACHINES:

(dump trucks, loaders, backhoes, wheel dozers and grader)

24 inch through to 63 inch...

BELAZ.

BELL EQUIPMENT.

CATERPILLAR.

DEZZI.

HITACHI. (Euclid)

JCB.

KOMATSU.

KAWASAKI.

LIEBHERR.

LIUGONG.

MOXY.

TEREX.

VOLVO.





CONTACT US

**Main Switch Board
Company Fax**

+27 16 341 9800
+27 16 341 2185

Physical Address

3 Bessemer Street, Heidelberg,
Gauteng

Postal Address

PO Box 335
Heidelberg, 1438
Gauteng, South Africa

Web Address

www.globalwheel.co.za

GPS Co-ordinates:

E-26.51902 – S 28.36225

Directors: S Nhlapo, V Mahlangu, T von Bardeleben, T Makofane & Pule

MBE Minerals



MBE Minerals, a leading supplier of minerals beneficiation technology to the African mining sector, has over the past 40 years built up an impressive reference base on the continent.

Among its technologies is the Pneufлот® flotation cell, which improves product quality and recovery, delivering lower capital and operating costs, as well as lower wear costs and higher efficiencies.



Pneufлот_discharge channels

The company's field proven BATAС® jig technology delivers higher efficiency, huge economic benefits, better product quality, better machine availability and higher throughput rates, while its ROMJIG® has proved particularly suitable as a reliable and economical solution in destoning raw coal.

The robust Jones® wet high-intensity magnetic separator (WHIMS) offers a high throughput capability coupled with simple maintenance and lower energy consumption. Significantly, MBE Minerals South Africa installed the largest WHIMS plant in the world outside Brazil in the Northern Cape.

MBE Minerals SA also manufactures a variety of vibrating screens, available up to 3.6m in width and 6.75m in length, in single-or double-deck configuration and in either circular or linear motion. The company's screens have been operating in the African mining industry for the past 40 years, mainly in the coal, diamond and iron-ore sectors.



COAL BENEFICIATION TECHNOLOGY



Roollstar_HPGR

MBE Minerals SA receives expertise and technical support from its worldwide network, including the MBE Coal and Minerals Technology research and development (R&D) centre in Cologne, Germany. The R&D centre consults with customers from all parts of the world with regard to optimum processing and this service is backed up by an in-house laboratory facility and pilot testwork capabilities. The centre is also used to train customers on either general mineral processing or the operation and maintenance of specific MBE equipment.



Sandvik Mining and Rock Technology

Telephone: +27 (11) 929 5300

Email Address: alice.ward@sandvik.com

Website: www.rocktechnology.sandvik.com

Product Description: Sandvik Mining and Rock Technology is a business area within the Sandvik Group and a global leading supplier of equipment and tools, service and technical solutions for the mining and construction industries. Application areas include rock drilling, rock cutting, crushing and screening, loading and hauling, tunneling, quarrying and breaking and demolition.



Industrial Water Cooling (Pty) Ltd

+27 11 466 0699

www.iwc.co.za

info@iwc.co.za

IWC offers engineered heat exchanger solutions to the mining industry. Whether you require a plate heat exchanger, brazed heat exchanger, spiral heat exchanger, shell and tube heat exchanger or spares for any of these, IWC can assist.



ARE YOUR EXTRACTION PROCESSES STARTING TO BECOME AN ORE-DEAL?

Axis House are leading Reagent Technology Management experts with a diverse and highly qualified team who will have you covered with cutting edge mineral processing reagents.

- FULLY EQUIPPED LABORATORY
- ACCURATE BENCHMARKING OF ALTERNATE REAGENT SUITES
- GLOBAL FOOTPRINT



Don't let your minerals get caught up in the wrong gangue.



Visit us today info@axishouse.co.za | www.axishouse.co.za | +27 11 463 4888



WearCheck Zimbabwe

A: 23 Amby Drive, Msasa, Harare

T: +263 (242) 446 369 / 73 / 72

E: evanm@wearcheck.co.za

or shesbyc@wearcheck.co.zw

PRODUCTS & SERVICES INFO:

WearCheck's primary goal is to help customers save money and time via a convenient "one-stop-shop", offering the full spectrum of reliability solutions for getting plant to perform at its peak. As well as traditional used oil analysis, WearCheck Zimbabwe also conducts thermography, vibration analysis, balancing, laser alignment, motor current analysis and milling.

WearCheck Zimbabwe provides a 24-hour sample turnaround time for used oil samples and offers an on-site sampling service, if needed.

Using these preventive maintenance tools substantially reduces the chances of a machine failing without warning, which can often have a catastrophic impact on a production line, while repairs are carried out and spare parts are ordered.

The Zimbabwean industries that are currently benefiting from WearCheck's condition monitoring services include: mining, earth-moving, agriculture, manufacturing, power generation, aviation and construction.

WearCheck has a network of 16 strategically-placed laboratories in nine countries around Africa and beyond. The labs are positioned to boost the accessibility of reliability solutions services to industries around the continent, often in areas where infrastructure is limited.

WearCheck Zimbabwe was formed in 2016, after WearCheck acquired the long-established Tribology Services oil analysis laboratory in Harare.

Released on behalf of WearCheck by Sharon Fay Public Relations

Media queries: Sharon 082 8230539 or sharon@sharonfaypr.co.za

MINING

RWW ENGINEERING (PTY) LTD

Reg. No. 1986/004209/07

PRODUCTS AND SERVICES OFFERED

- Low Voltage motor control panels.
- Medium Voltage motor starting panels.
- MV Variable frequency drives for mills, pumps & fans (Ingeteam).
- Liquid resistance motor starters (LRS) for slip ring motors.
- LV & MV Power Factor Correction capacitors and harmonic filter equipment.
- Power quality & Active Harmonic Filters.
- Static VAR Compensators (SVC) and Static Synchronous Condenser (Statcom)
- MV switchgear and circuit breakers (Schneider Electric).
- Noja Power Auto Reclosers
- Containerized & skid mount substations.

1047 Schooner Avenue, Laser Park, Johannesburg

PO Box 3180, Honeydew. 2040

T: +27 11 433 8003 F: +27 11 433 8011

sales@rww.co.za

- **Pepperl+Fuchs (Pty) Ltd**
1st floor Zerwick Forum
8 Glen Eagle Office Park
Cnr Monument and Braambos street
Glen Erasmia
Kempton Park
1619
South Africa
T. +27 (0)87 985 0797
F. +27 (0)86 756 8741
Email: info@za.pepperl-fuchs.com
Website: www.pepperl-fuchs.co.za



As a well-known global supplier of mining equipment, METQ specialises in:

- Professional test facilities to determine feasibility and/or to improve recovery & efficient wash plants
- Design of new plant & suggested process flows to optimise quality and profitability
- Building and erection of complete new mineral processing plants;
- Commissioning of plants to optimize recovery
- Large range of spirals to suit your specific needs;
- R&D department for new innovations & designs

The spiral is a low-cost gravity separator, designed to treat pulp with a mineral or coal content. Different models, with 1 to 3 helixes per column and any number of turns per helix, are available, depending on specific application.



Typical Applications:

- Coal
- Gold - alluvial or free
- Mineral sands - rutile, zircon, ilmenite
- Tungsten
- Silica sand
- Chromite
- Tin
- Iron
- Carbon - chips or slime
- Alumina silicate
- Soil cleaning
- Sulphides
- Copper
- Magnetite

gos Geosmatt gos

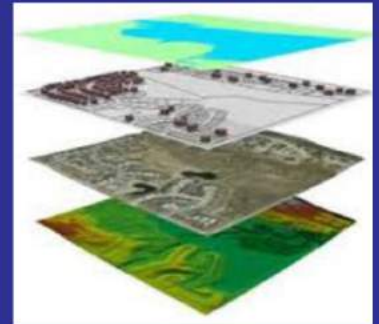
 **SURPAC** *Surveying Software*



Survey Equipment



Satellite Images



GIS Consultancy



Points of Interest



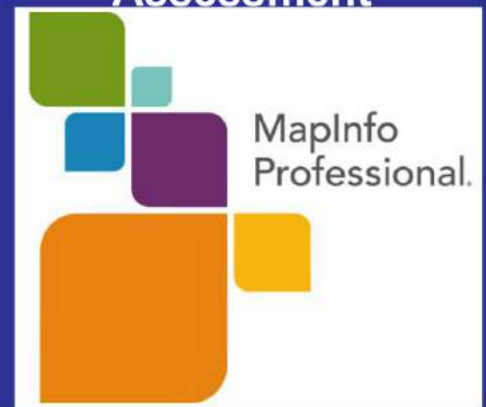
Topographical Surveys



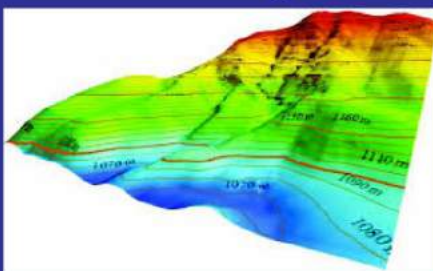
Environmental Impact Assessment



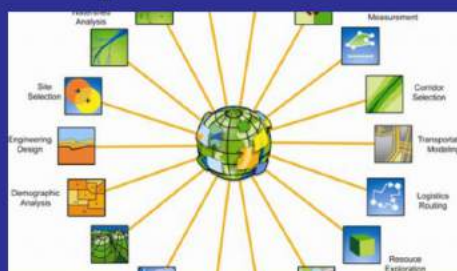
Engineering Surveys



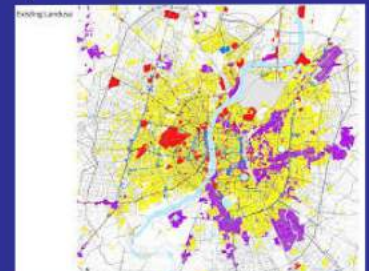
MapInfo Software



Mapping Analysis



GIS & Software Training



Land Consultancy

Contacts : +2634 783 044/50 / +263 777 313 634 / +263 712 778 393

geosmattpl@gmail.com

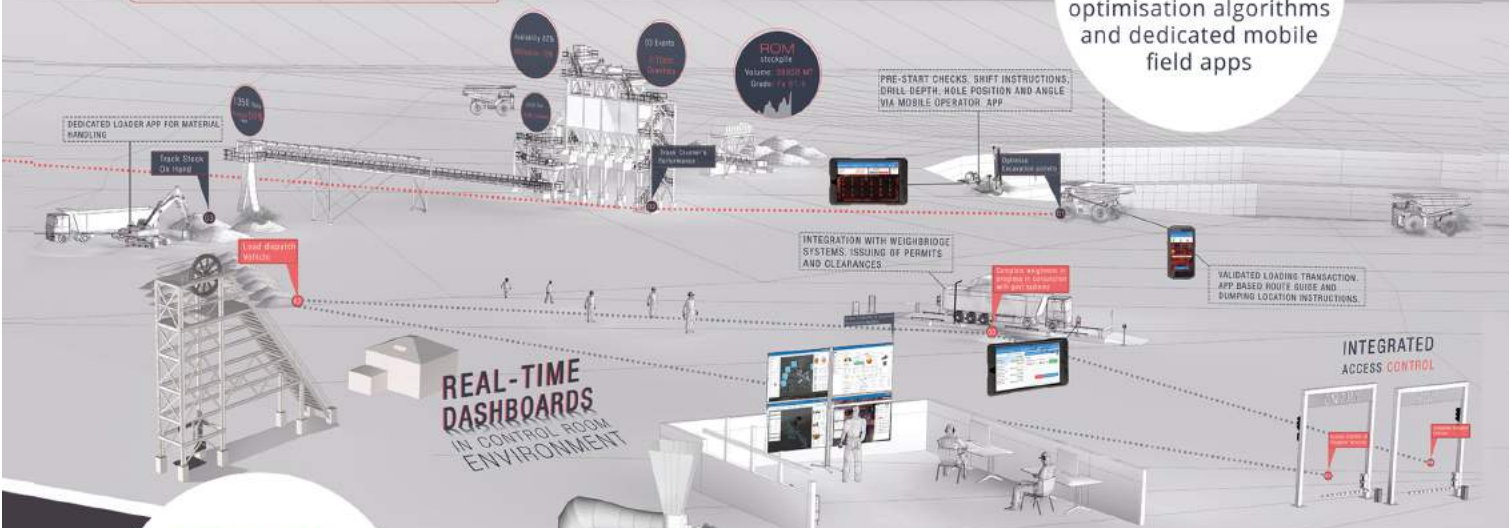
DIGITALLY TRANSFORM YOUR MINING OPERATIONS

Reactore: Software and technology solutions for enhanced mining operational management



IMPROVE PRODUCTIVITY

with Haul Cycle optimisation algorithms and dedicated mobile field apps



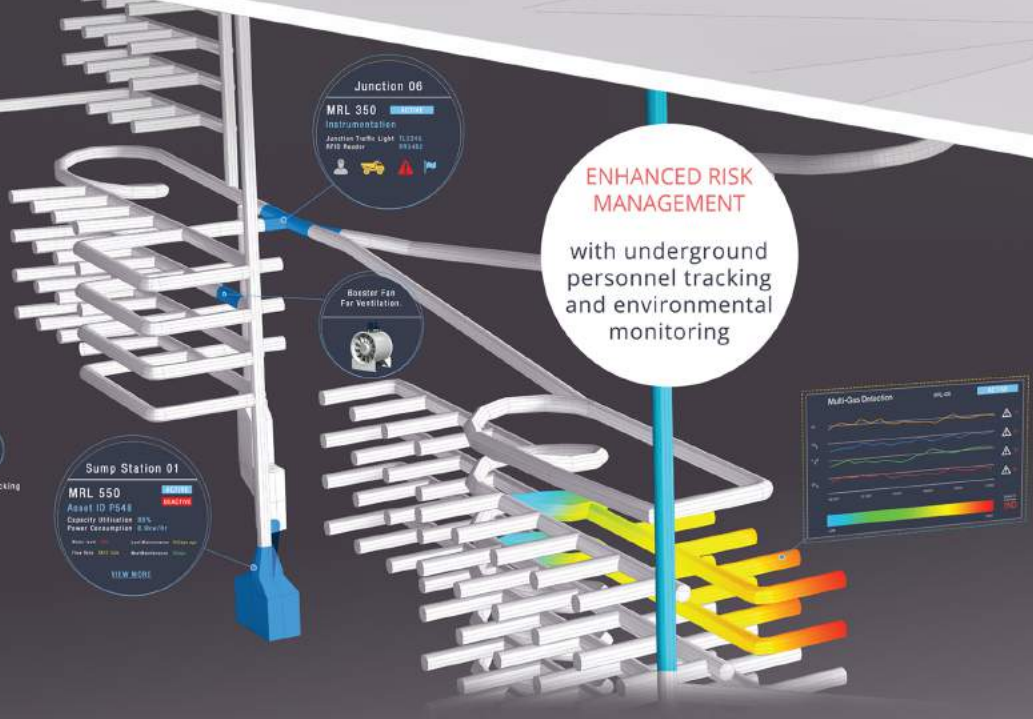
REDUCE COSTS

by increasing equipment availability and utilisation with real-time condition based monitoring maintenance

ENHANCED RISK MANAGEMENT

with underground personnel tracking and environmental monitoring

UNDERGROUND MINING DIGITALISATION SOLUTIONS



SOFTWARE TECHNOLOGY SOLUTIONS FOR THE ENTIRE MINING VALUE CHAIN





MMS Mobile Cranes

MMS Mobile Cranes are lifting solution experts for all your lifting requirements. MMS is the authorised distributor for Terex, Demag, Mobilift and Broderson cranes. Suppliers of All Terrain, Rough Terrain, Truck Mount, Pick and Carry, Tower Cranes and Industrial Cranes. With more than 20 years experience, MMS is your trusted supplier to the Southern African Mining Industry.

Contact: +27 11 421 6577
 Email: info@mmscranes.co.za
 Website: www.mmscranes.co.za

- **Pepperl+Fuchs (Pty) Ltd**
 1st floor Zerwick Forum
 8 Glen Eagle Office Park
 Cnr Monument and Braambos street
 Glen Erasmia
 Kempton Park
 1619
 South Africa
 T. +27 (0)87 985 0797
 F. +27 (0)86 756 8741
 Email: info@za.pepperl-fuchs.com
 Website: www.pepperl-fuchs.co.za

SUN ACE South Africa Mining Chemicals Range

CODE	MATERIAL	PURITY	USAGE
AIBT	Allyl Isobutyl Thionocarbamate	84%	Collector. Excellent selectivity and separating performance for copper ores. Also for copper-zinc sulphide ores.
DTP	Sodium Diisobutyl Dithiophosphate	50%	Collector in floating of copper, zinc, sulphides and precious metals with good selectivity. Good suppressor of iron pyrites during alkali circuits. Preferable in multi-ore floatation.
MIBC	Methyl Isobutyl Carbinol	99%	Frother.
IPETC	Isopropyl Ethyl Thionocarbamate	95%	Excellent collector for floatation of copper, lead, zinc, molybdenum sulphides.
NASH	Sodium Hydrosulphide	70%	Copper Floatation.
PAX	Potassium Isoamyl Xanthate	90%	Flotation of sulphide metallic ore. Very strong flotation chemical.
SIBX	Sodium Isobutyl Xanthate	90% or 85%	Flotation of sulphide metallic ore.
SMBT	Sodium Mercaptobenzothiazole	50%	Vulcanization accelerator in the rubber industry. Collector in flotation of sulphide ore and some oxidized ores.
STG	Sodium Thioglycolate	35%	Flotation reagent. It has the same effect as sodium cyanide to pyrite, copper, galena and molybdenum ores. Low toxicity, easy to separate and waste water is not hazardous. Type of depilatory.
SEX	Sodium Ethyl Xanthate	90%	Flotation of sulphide metallic ore.
SNPX	Sodium N-Propyl Xanthate	90%	Flotation of sulphide metallic ore.



SUPPLIERS OF QUALITY MINING CHEMICALS

XANTHATES | FROTHERS | COLLECTORS
 FLOTATION REAGENTS | NASH

Suppliers of xanthates, frothers and collectors to the mining industry, including copper, gold, zinc, lead and other sulphide metallic ores.

+27(11) 652 6200 • www.sunace.co.za facebook.com/sunaceza



Era Polymers Africa Pty Ltd

(Reg No. 2016/352406/07)

www.erapol.co.za

2A High Street
Modderfontein, Gauteng
South Africa
(PO Box 328, Modderfontein, 1645)

Tel: 011 608 2584
Fax: 011 608 2593



Sandvik Mining and Rock Technology

Telephone: +27 (11) 929 5300

Email Address: alice.ward@sandvik.com

Website: www.rocktechnology.sandvik.com

Product Description: Sandvik Mining and Rock Technology is a business area within the Sandvik Group and a global leading supplier of equipment and tools, service and technical solutions for the mining and construction industries. Application areas include rock drilling, rock cutting, crushing and screening, loading and hauling, tunneling, quarrying and breaking and demolition.

Era Africa was formed at the end of 2016 as a partnership between Diverse Urethanes and Era Polymers. The production facility is based in Founders View, Edenvale where a wide range of high quality products are manufactured. Era Africa both development and QC laboratory facilities as well as access to global R and D resources. The company supplies a range of products for use in mining applications including hot cast elastomers and polyurea spray systems. Other products supplied include cold cast elastomers, bakkie liner spray systems and construction chemicals such as waterproofing membranes.

For further information please refer to the website, www.erapol.co.za or e-mail Era Africa at info@erapol.co.za



INNOVATING MINING REAGENTS FOR THE FUTURE

Leaders in reagent development

On-site plant optimisation & full service offering

Value added to entire production process



Africa | Australia | Europe | Central Asia | South America

We formulate, manufacture, stock, distribute, implement and finance a full range of mineral processing reagents across the globe.

+27 11 463 4888 | info@axishouse.co.za | www.axishouse.co.za



TEKTOWER

Cooling Tower Specialists

a Member of the IWC Group

Industrial Water Cooling (Pty) Ltd

+27 11 466 0699

www.iwc.co.za

info@iwc.co.za

Tektower has over 14 500 cooling towers in operation across the African continent. Designed to be robust and durable enough to withstand the harsh African climate, Tektower cooling towers have truly stood the test of time. Tektower offers a comprehensive range of package and modular cooling towers.



MBE Minerals SA Pty Ltd

MBE MINERALS

Suppliers of:

- HPGR
- Palla Mill
- Pneufлот
- Batac Jig
- Romjig
- Teska DMS separator
- Jones WHIMS
- Permos magnets
- Screens

+ 27 11 397 4660

+ 27 11 397 4411

+27 84 501 5502

P O Box 8460, Elandsfontein, 1406

36 Wankel Street, Jet Park, Boksburg, 1459, Gauteng, South Africa

jkottmann@mbe-minerals.co.za

www.mbe-cmt.com



We partner with mines to maximise the bottom line

Complete solution provider to the mineral flotation process industry to help reduce \$ per tonne treated

Our capabilities:

- Manufacturer of bespoke chemicals
- Independent test-work
- Process improvements
- Plant optimization
- Improving working capital cashflow and profits

Products

Flotation Reagents

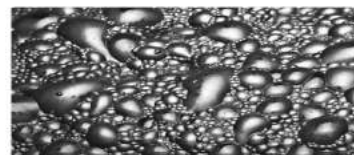
Flocculants

- Anionic
- Cationic
- Non-Ionic

Manufacture a full range of:

- Frothers
- Collectors: Primary and secondary
- Depressants
- Ph Modifiers
- Flocculants

For: gold, platinum, copper, cobalt, nickel, zinc, lead, uranium, lithium, coal, sulphide ores, oxide ores, mixed ores



NatSu Africa PBC is a Zimbabwean Company that analyses, designs, tests, manufactures, implements, supplies and supports unique solutions for unique challenges. Contact Greg Kruger today and find out how we can assist you with your individual needs.



greg@natsusolutions.com



www.natsusolutions.com



+27 82 800 4435

Address: 23 Marlborough Drive, Marlborough, Harare, Zimbabwe

COMPANY PROFILE

Wilec, a division of Actom (Pty) Ltd, was established in 1953, and consists of 2 operating divisions, Electrical and Industrial. We are technical solutions providers to a diverse range of industries, with products stocked in 5 major distribution centres in South Africa. The manufacturing site in Olifantsfontein and the distribution centres in Johannesburg, Cape Town, Durban and Middleburg are all ISO 9001:2008 certified, and in-house converting facilities include slitting of adhesive and non-adhesive tapes, CNC machining, and manufacture of custom-designed kits. A talented team of product specialists ensures that customers have technical application support, and provides access to the latest technology through partnerships with leading global manufacturers.

ELECTRICAL DIVISION

COPPER PRODUCTS

- Round and rectangular magnet wire
 - Polyurethane (PU), Armoured Polyesterimide (API) and inverter grade enamels
- Covered conductor
 - Nomex®, kraft paper, polyimide film, mica, PETP film and glass
- Earthing strip

INSULATING MATERIALS AND ANCILLARY PRODUCTS

- Flexible insulation
 - Films, tapes and laminates for rotating machines and dry-type transformers
- Rigid laminates
 - Epoxy and polyester glass, phenolic paper and fabric, machined to requirements
- Resins and varnishes
 - Epoxy and polyester resins, solvent-based varnishes
- Cables
 - Specialised cables for motor, transportation and construction applications
- Test and process equipment
 - Surge testing and condition monitoring equipment, VPI plants

**WILEC**
08611WILEC

 **Transwire**

A division of ACTOM (Pty) Ltd

Johannesburg (Head Office) +27 (0)11 629 9300 Durban +27 (0)31 569 4883
CapeTown +27 (0)21 556 5720 Middelburg +27 (0)13 246 2330/1
Pietermaritzburg +27 (0)33 345 0264 sales@wilec.co.za www.wilec.co.za



Geosmatt P/L

164 The Chase Road
 Mount Pleasant
 Harare
 Zimbabwe
 +263 4 783 044/50
 +263 777 313 634
 +263 712 778 393

geosmattpl@gmail.com

Our services include; Surpac Surveying Software, MapInfo Professional GIS Software, Topographical and Engineering Surveying, GIS Consultancy, Surveying and GIS Equipment, GIS Training, POI Mapping, Primary Data Mapping, Land Consultancy.



Contact Details

Sales Director: Piet Du Preez
 Cellphone: +27 83 638 0382
 Work Phone: +27 13 246 9170
 Email: pietdp@thosbegbie.com

In-house non-destructive testing capabilities and services include:

- Computer-aided design and drawing office
- Pattern shop and tooling manufacturing
- Solidification and methoding expertise
- Pipe and tube manipulation and coil fabrication
- General fabrication and speciality welding
- Laboratory with Wet-Chem and metallurgical chemical analysis
- Modern Fettleing and sand-blasting plant
- Flaw-detection analysis using X-ray, ultrasound, infrared thermal imaging
- Mechanical properties pressure and flow-rate testing

(This range of NDT testing facilities is unique among competitors worldwide)



TRANSFORMER MATERIALS AND COMPONENTS

- Raw material, components and kits for distribution and power transformers
- Auxiliary products
 - Buchholz relays, pressure relief valves, temperature indicators and tap-changers

BEARINGS & ANCILLARY PRODUCTS

- FAG ball and roller bearings for rotating machines
- KBF bearings for bulk handling, mining equipment, agricultural and general industries

INDUSTRIAL DIVISION

AVAST™ SELF ADHESIVE TAPES

- Avast™ packaging tape, masking tape, duct tape, insulation tape and double sided tape
- Bag-sealing & tamper evident tapes, autoclave tape, protection films, sign vinyl, vehicle wrap films, digital print & heat transfer media for the security, healthcare, pharmaceutical, automotive, retail, sports & fashion-wear and signage markets



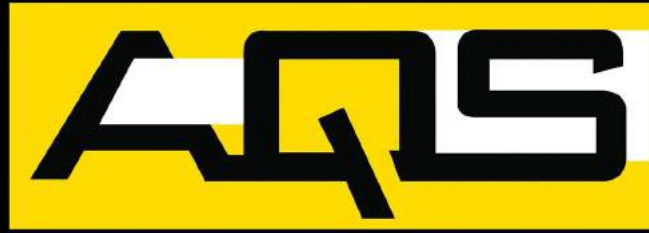
Shaped for women who shape the world

For women in industry, the right safety footwear can help conquer the greatest hazard, but there is no one-size-fits-all when it comes to their safety footwear needs. This is why choice is essential. At SISI, we offer 14 styles of safety shoes, extending across 3 sole shapes, tailored for women with narrow, medium and wide-shaped feet. Our range explores new footwear styles, colours, finishes and of course, comfort... all because we're honoured to have women who shape the world walk in SISI shoes.

www.sisi.co.za



Member of AxFlow Group



LIQUID TRANSFER

AXFLOW

fluidity.nonstop

**An importer and distributor
of pumps in Africa.**



Contact us for any enquiries:

AQS Head Office

Tel: +2712 548 7204

E-mail: aqsmontana@aqslt.co.za



www.aqsliquidtransfer.co.za



Scan here to get to
know us