



# Zimbabwe

*Mining*

*Suppliers*

*Directory*

**2022**

1st Edition

**A BUYER'S GUIDE**



*The chemical people*

# YOUR LEADING SUPPLIER OF QUALITY MINING CHEMICALS



**CAUSTIC SODA**

SODIUM CYANIDE 50KG

CAUSTIC SODA 25KG

ACTIVATED CARBON 25KG (6"12)

ACTIVATED CARBON 25KG (8"12)

BORAX ANHYDRIDE 25KG

HYDROGEN PEROXIDE 30KG



**MINING EXPLOSIVES**

SULPHURIC ACID 40KG

NITRIC ACID 34 KG

HYDROCHLORIC ACID

HYDRATED LIME 25KG

ZINC DUST 25KG

LEAD NITRATE 25



**NITRIC ACID**

**CONTACT US FOR MORE INFO:**

# 086 770 07179

1 ROBERT DRIVE,  
MSASA HARARE  
077 614 9269  
077 663 3237  
077 497 0180

SPLASH PLASTICS,  
109GEORGE AVE,  
GHEGUTU  
077 233 8692

28 JOSIAH  
CHINAMANO ROAD  
BELMONT, BULAWAYO  
077 215 6295  
078 218 0546

2101 BRISTOL ROAD  
HEAVY INDUSTRIAL AREA  
GWERU  
078 433 9912  
077 161 1796



The Probe Mining Group of companies has evolved to offer a comprehensive, strategic array of best-of-breed technologies, products, and solutions that significantly improve the design of digital mines and data analysis through end-to-end Digital Mine Operation Solutions. Our integrated offering incorporates Operation Level 9 collision avoidance systems, the design and manufacture of safety solutions, air quality and gas monitoring, renewable energy, industrial solutions, air power, and other specialised solutions. We further provide auto electrical field services, batteries, spares & parts for off-highway vehicles (OHV) spares related to Komatsu drive systems, OEM harness manufacturing and Electrical Vehicle conversions.

**AUTOMOTIVE SOLUTIONS** - We offer a complete range of multipurpose and deep cycle batteries for all commercial and industrial applications, including marine, camping, uninterrupted power supplies (UPS), back-up power, solar, and solutions for telecommunication stations and energy lighting. This series includes lead calcium "wet plate type", tubular, AGM, GEL and Lithium-ion Phosphate technologies that cater for various deep cycle applications.

**INTEGRATED MINING TECHNOLOGY SOLUTIONS** - We focus on providing integrated solutions and transformation processes in the mining sector. Our investment in new technologies delivers secure and out-of-the-box solutions, including uptime and remote monitoring, for a more efficient and accurate exploration of operations. We capitalise on the potential of technologies, including the Internet of Things (IoT), big data and cloud computing to transform operations, better positioning mines to be able to address resource challenges and environmental pressures moving forward. Our intelligent systems combine technology, people, and processes to enable feedback loops, defining an organisation's competitiveness and ability to change the industry landscape. We design and manufacture custom solutions with our customer to overcome all the mining, construction, agriculture, marine and industrial sectors challenges.

**INDUSTRIAL TECHNOLOGIES SOLUTIONS** - We specialise in pneumatic brakes and clutches, industrial gearboxes, electric motors, bearings, as well as other related power transmission products servicing the industrial, mining, and marine markets. Fawick South Africa has been in operation for more than 30 years and is constantly expanding their product range. Through providing quality air, power, safety and energy solutions to industrial clients – we combine optimal performance with huge energy saving benefits. Not only do we offer strong aftermarket service and support, always including expert service technicians and ensuring the availability of spares, but we are also able to conduct air audits and air compressor assessments to ensure that the best products are selected for specific applications.

**RENEWABLE ENERGY SOLUTIONS** - We offer a dynamic selection of carefully sourced energy-relevant products and solutions from top global brands, as well as our own ProbeEnergy product range. Our offer is aligned with our mission to make world-class energy solutions accessible in Southern Africa. There is a huge need in the market for high quality yet affordable energy solutions for solar applications, particularly lithium-ion phosphate batteries, capacitor batteries, chargers and conversions - which have historically been very expensive. We're focused on offering the range, expertise and advice that mining, industrial and domestic users need to revolutionise their energy sources. ProbeEnergy further offers power solutions for a wide range of applications, including solar and backup, UPS, industrial, marine, telecommunications, heavy and light duty automotive, including conversions from diesel to Electrical Vehicle & charging systems.

**SUSTAINABILITY**

The Probe Mining Group of Companies views environmental practices as a central component of all planning and development. As an evolved mining organisation focused on social, environmental and economic sustainability guidance, we are proud partners of the Mandela Mining Precinct on The Real-Time Information Management Systems (RTIMS) research programme, which aims to improve data sourcing, transmission, storage, dissemination, information management tools, practices, and procedures for mines.

**EXCELLENCE THROUGH INTEGRATION**

All Probe Mining Group products and solutions are proven class leaders within the mining, construction, agriculture, marine and industrial sectors industry. Combined with the Gold Standard of professional installation and rigorous maintenance, our offering ensures that uptime for our clients remains well within the desired targets. We partner with our customers to deliver products and solutions that will improve productivity and safety by meeting their specific requirements. Ultimately, this reduces the Total Cost of Ownership for our customers.

## Display Adverts

CureChem.....	IFC
Probe IMT .....	1
Spilo /Stitchwise .....	3
Axis House.....	5
Gatundu Trading.....	6
Africore.....	6
BOVA.....	7
EHD Components.....	9
Layher.....	11
Hella Mining.....	12
Adroitly Africa .....	13
Wayne.....	14
Adlam Engineering.....	15
AQS .....	16
Komatsu.....	17
Wilec .....	18
Metq .....	20
Geosmatt.....	21
Reactore.....	22
BBF Sisi.....	23
CureChem.....	27
Shelhurst Components.....	IBC
Probe IMT.....	OBC

## Profiles

RWW Engineering.....	8
EHD Components.....	10
Wearcheck .....	19
Natsu.....	24
Wilec.....	25,26



Published by : Creative Line media (Pty)Ltd

33 Hill Street Ferndale, 2194

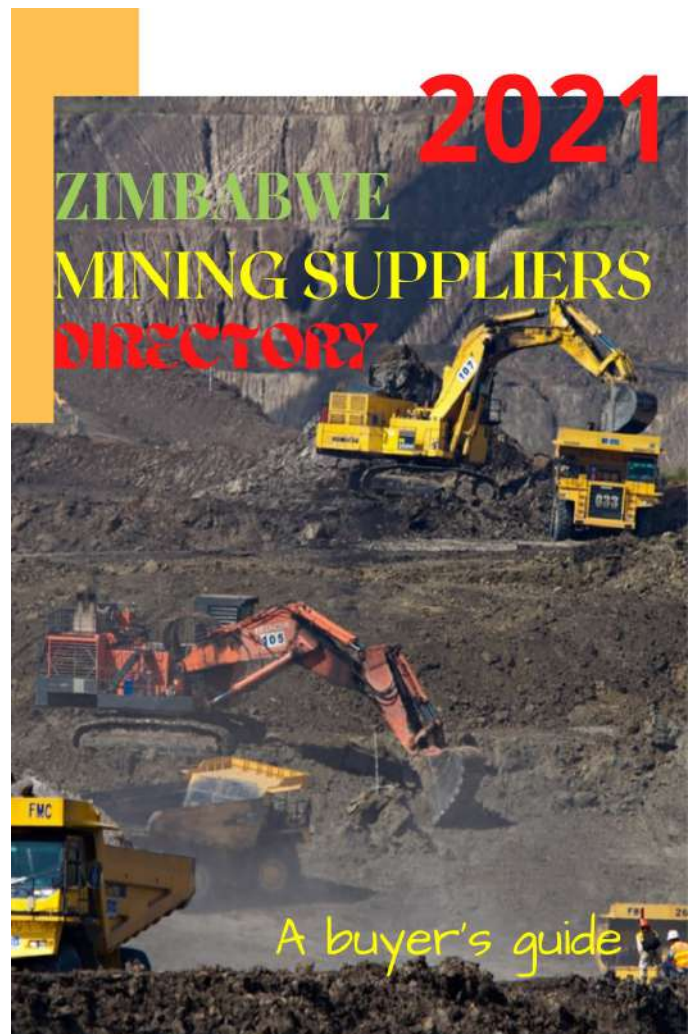
info@miningnewszimbabwe.com

+27 10 023 2572

[www.miningnewszimbabwe.com](http://www.miningnewszimbabwe.com)

## LISTINGS

Spilo/Stitchwise .....	3
Vega Instruments.....	4
Dehn Africa.....	4
RWW Engineering.....	4
Vac-cent.....	5
Aberdare Cables .....	5
Gatundu Trading.....	6
Isiqalo Enterprises.....	6
Deltec.....	12
First National Batteries.....	12
Turnkey Instruments.....	13
Adroitly Africa.....	13
Natsu.....	17
GfG.....	17
RWW Engineering.....	20
Pepperl+Fuchs.....	20
Industrial Watercooling.....	24
MBE Minerals.....	24
Thos Begbie.....	26
Geosmatt.....	26



# STITCHWISE



## Stitchwise (Pty) Ltd

### Products & Personal Protective Equipment

Knee & Arm guards,  
Reflective & non reflective Kidney Supports, Belts,  
Belts braces, Head gear, Reflective Hard Hat Harness,  
Cap Lamp Belts, PVC Pouches & Bags, Canvas Pouches  
Canvas Bags, Bulk Bags, Tree Planting bags,  
Hygrometer Pouches, Wet & dry bags,  
backfill bags, Safety Nets, Dewatering bags and many more

### Address

1 Nursery Road

Western Levels

Carletonville

2501

Tel: +27 (0) 18 788 2622

Mail: [sales@stitchwise.co.za](mailto:sales@stitchwise.co.za)

[www.stitchwise.co.za](http://www.stitchwise.co.za)

## Spilo (Pty) Ltd

With over 50 years' worth of experience in developing products for the South African mining industry, we've gained a deep technical understanding of what works best, whilst still meeting the highest specification standard requirements. Our products are designed and manufactured with the unique safety and regulatory requirements in mind, which is why our customers prefer our locally manufactured solutions.

### Products:

Spilo Backfill Bags, Fuse Yarn, Zebra Tube Dewatering Bags

### Address

Cnr Oosterland & Drommedaris Street

Dal Josafat

Paarl

7646

Tel: +27 (0) 21 862 6100

Mail: [sales@spilo.co.za](mailto:sales@spilo.co.za)

[www.spilo.co.za](http://www.spilo.co.za)

 **StitchWise**

## BACKFILL BAGS

**Spilo and Stitchwise produce specific geotextiles utilised in the world of deep-level mining.**

Backfill Bags are manufactured from a uniquely woven geotextile. Every client has a different requirement and Spilo and Stitchwise's experienced teams are able to determine the most cost-effective geotextile to be used in conjunction with your slurry and support fill. Our geotextile backfill bags have varying percolation rates with various specifications.

Spilo and Stitchwise have been manufacturing backfill bags for more than two decades, and our focus on precision and consistent attention to detail allows for the ultimate support system. Our backfill bags are used in underground mines throughout Africa. We have successfully supported the hanging wall (roof) of the deepest mine in the world for many years.



[www.spilo.co.za](http://www.spilo.co.za)  
[www.stitchwise.co.za](http://www.stitchwise.co.za)

### Get In Touch

Contact Spilo

✉ Email [sales@spilo.co.za](mailto:sales@spilo.co.za)

☎ Phone +27 21 862 6100

Contact Stitchwise

✉ [sales@stitchwise.co.za](mailto:sales@stitchwise.co.za)

☎ Phone: +27 18 788 2622

## RWW Engineering (Pty) Ltd



### RODUCTS & SERVICES:

Air Insulated Medium Voltage Switchgear up to 33kV

Power Factor Correction & Harmonic filtering – 400V to 275kV

STATCOM, SVC & Active Filtering

Capacitors, Reactors & Resistors

Outdoor Cast Resin Current & Voltage Transformers

Liquid Rotor Starters (EPM, Vapormatic)

Driescher - Isolators

Variable Speed Drives & Frequency Convertors

Littelfuse Startco – Protection Relays

Noja Power – Automatic Reclosers

Toshiba – Drives, PLC & Vacuum Contactors

GP Tech – Grid Tied PV Invertors

Installation, Maintenance & Fault Finding of all Medium Voltage Electrical Equipment

### CONTACT DETAILS:

[sales@rww.co.za](mailto:sales@rww.co.za)

+27 11 433 8000

Jeremy Wood

## DEHN Africa (Pty) Ltd

DEHN Africa PTY Ltd is a manufacturer and solution provider for all your lightning protection, surge protection, earthing and electrical safety equipment requirements. We provide consulting services, designing your lightning protection and/or earthing systems, and specify the necessary components and surge protection devices to ensure the protection of your plant, staff, and automation systems (and/or distribution boards).

Our electrical safety equipment range includes, and is not limited to voltage detectors, phase comparators, portable earth equipment and arc fault protection systems.

For more information, contact DEHN Africa.

**Unit 2 K101 Business Park**

**Capital Hill Commercial Estate**

**Le Roux Ave, Midrand. 1685**

[www.dehn-africa.com](http://www.dehn-africa.com)

+27 11 704 1487

+27 82 944 1437

[tatenda.gora@dehn-africa.com](mailto:tatenda.gora@dehn-africa.com) / [info@dehn-africa.com](mailto:info@dehn-africa.com)

## VEGA Instruments SA (Pty) Ltd

Tel: +27 11 795 3249

Fax: +27 11 795 2422

1493 Mailship road, Laser Park, Honeydew

Email: [info.za@vega.com](mailto:info.za@vega.com)

### Product Description :

For over 60 years, VEGA has provided industry-leading products for the measurement of level, density, weight and pressure. As the inventor of the modern radiation-based measurement system and the first to introduce a two-wire loop powered radar, VEGA has a strong tradition of product development and improvement. VEGA recently added optional Bluetooth technology to PLICSCOM, a detachable display and adjustment module.



Vac-Cent services (Pty) Ltd , An Iso 9001:2015 company, was formed in the second quarter of 1987 with the objective of retaining the manufacturing licence for Nash Liquid ring Vacuum pumps and compressors and related products, in South Africa. Major markets still serviced since 1981 still remain pulp and paper, chemicals, Food, Coal, Mining, Power and wastewater treatment.

Vac-Cent now manufactures two different sizes vessel mounted filtrate pumps also 100% locally. These are also available in SG Iron and Stainless steel or a combination of the two materials.

124 Snapper Road,  
Wadeville  
Germiston  
South Africa  
1422  
Tel +27 11 827 1536

Aberdare Cables is the largest cable manufacturer in Southern Africa specialising in electrical cables for application in power transmission, distribution and generation.

The product offering extends across multiple market sectors like energy, building and construction, mining, renewable energy, transport, large industry, OEM, retail, agriculture and engineering services.

+27 11 396 8000  
info@aberdare.co.za  
www.aberdare.co.za



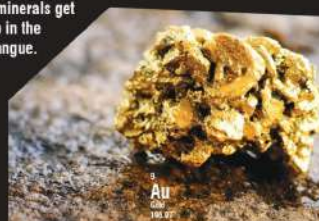
## ARE YOUR EXTRACTION PROCESSES STARTING TO BECOME AN ORE-DEAL?

Axis House are leading Reagent Technology Management experts with a diverse and highly qualified team who will have you covered with cutting edge mineral processing reagents.

- FULLY EQUIPPED LABORATORY
- ACCURATE BENCHMARKING OF ALTERNATE REAGENT SUITES
- GLOBAL FOOTPRINT



Don't let your minerals get caught up in the wrong gangue.



Visit us today [info@axishouse.co.za](mailto:info@axishouse.co.za) | [www.axishouse.co.za](http://www.axishouse.co.za) | +27 11 463 4888

# SUPPLY CHAIN AND MANAGEMENT

YOUR PARTNERS IN EXPLORATION



WWW.EXPLORESTORE.CO.ZA

074 802 2315

MICHELLE@AFRICORE.CO.ZA

## Gatundu Trading Corporation

Atrium on 5<sup>th</sup>, 9<sup>th</sup> Floor  
Sandton

Gauteng, 2196

Office: +27 10 745 0030

Chris: +27 60 818 3911

[sales@gatundutrading.com](mailto:sales@gatundutrading.com)

[www.gatundutrading.com](http://www.gatundutrading.com)

For Procurement & Logistics Services to clients in the SADC Region and Beyond.

We Procure, Consolidate, Warehouse and Transport to final destination.

Official Agents for Screenex Manufacturing.

## Isiqalo enterprises (Pty) Ltd

2 Napier Street  
Crystal Park

Benoni

+27 10 023 4887

+27 83 610 0384

[info@isiqaloenterprises.co.za](mailto:info@isiqaloenterprises.co.za)

[www.isiqaloenterprises.co.za](http://www.isiqaloenterprises.co.za)

We supply all crusher spares, hydraulic equipment, Aircon & Refrigeration, Truck conversion, Cubic bin manufacturing, Hydraulic repairs, hydraulic hose kits, Nylon tubing. All manganese and mechanical parts sourced and delivered.

**Gatundu**  
TRADING CORPORATION PROPRIETARY LIMITED

For reliable procurement and cost effective solutions throughout the SADC region

AGENTS FOR

**Screenex**  
MANUFACTURING  
(Pty)Ltd

SCREENEX IS A SPECIALIST SCREEN MEDIA COMPANY IN SOUTH AFRICA. THAT DESIGNS AND MANUFACTURES SOLUTIONS FOR THE MINING AND QUARRYING INDUSTRY WORLDWIDE.

**OUR PRODUCT LINE INCLUDES**

- POLYURETHANE
- RUBBER SCREEN PANELS
- WOVEN WIRE SCREENS IN HIGH CARBON AND STAINLESS STEEL
- SUPPORT FRAMES

**ALL SCREENS**

**CONTACT US**  
GATUNDU TRADING (PTY) LTD

Atrium on 5th, 9th floor, Sandton 2196  
13 Simm Road, Pomona, Kempton  
+27 674 095 147, +27 608 183 911  
+27 10 745 0030  
[Chris@gatundutrading.com](mailto:Chris@gatundutrading.com)

**GET** **Gatundu**



E N G I N E E R E D   W I T H   P U R P O S E

The **BOVA RANGE** enables you to correctly select protection for a broad spectrum of personnel, from on-site business execs to miners deep underground and virtually every work place in between. Specialised technologies ensure specific safety for various industries. In this way, workers' safety is never compromised and spend is expertly utilised.

No matter your terrain, we have the exact footwear engineered to overcome it.



LIGHTWEAR | HEAVYWEAR  
EXTREMEWEAR | PARAMILITARY

[www.bova.co.za](http://www.bova.co.za)





RWW ENGINEERING (PTY) LTD

Reg. No. 1986/004209/07

1047 Schooner Avenue, Laser Park, Johannesburg

PO Box 3180, Honeydeew. 2040

T: +27 11 433 8003 F: +27 11 433 8011

sales@rww.co.za

## ELECTRICAL PROJECT ENGINEERS & MANUFACTURERS

### COMPANY PROFILE

R.W.W. Engineering (Pty) Ltd was established in 1986 and has a long history of supplying quality electrical equipment to the mining industry throughout Africa.

The Company has a modern 4000m<sup>2</sup> manufacturing facility based in Johannesburg, with a team of Engineers, Technicians and Tradesmen committed to providing excellence in design, service and quality of manufacture for all our products.

### PRODUCTS AND SERVICES OFFERED

- Low Voltage motor control panels.
- Medium Voltage motor starting panels.
- MV Variable frequency drives for mills, pumps & fans (Ingeteam).
- Liquid resistance motor starters (LRS) for slip ring motors.
- LV & MV Power Factor Correction capacitors and harmonic filter equipment.
- Power quality & Active Harmonic Filters.
- Static VAR Compensators (SVC) and Static Synchronous Condenser (Statcom)
- MV switchgear and circuit breakers (Schneider Electric).
- Noja Power Auto Reclosers
- Containerized & skid mount substations.



# e h d

# COMPONENTS 2005

(PTY) LTD

t/a ENGINE & HEAVY DUTY COMPONENTS

⊕ AGRICULTURAL ⊕ CONSTRUCTION ⊕ MINING ⊕ TRANSPORTATION ⊕



## www.ehd.co.za

**HEAVY DUTY DIESEL ENGINE REPLACEMENT PARTS SUITABLE FOR:**

ADE  
CASE  
CATERPILLAR  
CUMMINS  
DAF  
DEUTZ  
DONG FENG  
FIAT  
FORD  
GARDNER

GM DETROIT  
HATZ  
HINO (TOYOTA)  
INTERNATIONAL  
ISUZU  
IVECO  
JOHN DEERE  
KOMATSU  
LEYLAND

Lister  
MACK  
MAN  
MASSEY FERGUSON  
MERCEDES  
MITSUBISHI  
NEUSS  
NISSAN  
PERKINS

PETTER  
RENAULT  
RICARDO  
RVI  
SCANIA  
SDEC  
TATA  
VOLVO  
YANG DONG  
WEICHA

**Johannesburg Head Office**

**Tel: 011 870 5000**

**Fax: 011 836 0474**

**ehd@ehd.co.za**

**EHD House**

**Cnr. Hubert & Marshall St**

**Marshalltown Johannesburg 2001**

Manufacturer's names, numbers, symbols, photos and descriptions are used for reference purposes only and it is not implied that the parts referred to are the products of those manufacturers. Warranty conditions are available on our website [www.ehd.co.za](http://www.ehd.co.za)

Whilst there are several companies in South Africa that carry parts for diesel engines, only EHD Components carries such a vast range of diesel engine parts. We cater for the widest range of diesel engine models in the country and our 6,000m<sup>2</sup> head office and warehouse in Johannesburg carries in excess of 72,000 product line items!

Together with our branches in Durban, Cape Town and Bloemfontein, and our business partners in Namibia; Mozambique; Botswana; Zambia and Zimbabwe, we are well placed to service the entire Southern African (SADC) region as well as customers further afield and in the UK and Europe.

Our relationship with suppliers and manufacturers across the globe spans many years; some as far back as 1953. The directors' visits to suppliers' offices and factories, as well as to international trade shows and exhibitions, such as Auto Mechanika, ensures their ongoing support both in our day-to-day trading and also in the event of any product claims.

EHD is constantly researching and developing new markets and in many instances this research has prompted EHD's suppliers to improve their products or extend their ranges.

EHD is the sole distributor of the *Premium Plus* range of products, including the engine models preferred by the Namibian government for their rural water and power projects- as well as a series of generators.

The range of heavy duty diesel engine replacement parts that we carry are suitable for a wide range of makes and models for all applications, including ADE; Case; Caterpillar; Cummins; DAF; Deutz; ERF; GM Detroit; Fiat; Ford; Gardner; Hatz; Hino (Toyota); International; Isuzu; Iveco; John Deere; Komatsu; Leyland; Lister; Mack; MAN; Massey Ferguson; Mercedes; Mitsubishi; Neuss; Nissan; Perkins; Petter; Renault; RVI (Berliet); Scania; Tata and Volvo.

- Engines, for vehicles as well as stationary applications such as generators and pumps.
- Generator Sets:
  - from 2kVA to 300kVA – standard stock items
  - over 300kVA to 1000kVA - manufactured to order
- Light Agricultural & Construction Equipment such as water pumps; high pressure washers; compactors; rollers; welding machines and compressors.
- EHD uses the robust and reliable Unibase system which is designed to meet the needs of the vehicle after-market and parts industry- from quoting to managing of accounts. In due course, qualifying customers will be granted access to our intranet catalogue.

Our experienced Sales staff and our professional after-sales and technical support ensure that customers in our unique market receive the best possible service.

Our staff are all fully aware of the importance of good service and customer relations. They constantly strive to improve their individual abilities and performance in their fields of responsibility, and benefit from ongoing training.

*Together we strive to offer our customers the best possible products and service, at the best possible price, and to build and maintain mutually beneficial long-term business relationships.*

**Johannesburg Head Office**  
**Tel: 011 870 5000**  
**Fax: 011 836 0474**  
**ehd@ehd.co.za**

**EHD House**  
**Cnr. Hubert & Marshall St**  
**Marshalltown Johannesburg 2001**

# Layher®

## More Possibilities. The Scaffolding System.

This brand promise made by Layher is the expression of a philosophy that we've been living by for over 75 years.

Layher, the world's largest producer of high-quality system scaffolding, was established as a family company in 1945 in Eibensbach, Germany.

Over the years, Layher has pioneered the development of advanced scaffolding systems and is consistently at the forefront of innovation, safety and quality.



South African subsidiary, Layher (Pty) Ltd, has been based in Johannesburg since 2011 and provides safety, simplicity and proximity in training and innovation. The company's versatility and high standards of engineering and service provision mean that profitability and safety are not contradictory.



Proudly recognised as the world's no. 1 system scaffold designers and manufacturers, Layher's exceptional quality in production, wide availability of stock, highly qualified and experienced technical support and on-site services are unmatched in the industry.



Layher's integrated system combines efficiency safety, strength, innovation, quality and service. We offer rapidly easy to assemble, lightweight, versatile, attractive and cost-effective environment protection systems and multiple solutions for workforce scaffolding access, public stairways and bespoke needs. When public safety and comfort come first, Layher's Allround Event Systems provide an inspired experience.

When you're working with Layher, you're working with the best!

### Layher (Pty) Ltd

122 Koornhof Road  
Meadowdale, Germiston, 1609  
P.O Box 12095, Edleen, 1625  
Phone: +27 11 393 1929  
Email: [sales@layher.co.za](mailto:sales@layher.co.za)

Fax: +27 11 393 1926  
[www.layher.co.za](http://www.layher.co.za)



**DELTEC ENERGY SOLUTIONS (Pty) Ltd**  
6 Liebenberg Street, Alrode,

Alberton, 1449

P.O. Box 123888, Alrode, 1451

+27 (0) 11 864 7930

[Sales@deltec.co.za](mailto:Sales@deltec.co.za)

[www.deltec.co.za](http://www.deltec.co.za)

Established in 1979, Deltec has been leading the industry through innovation and always offering our clients the perfect balance of quality and affordability. We began selling maintenance-free batteries to the automotive market and expanded to offer industry leading products, systems, and turnkey energy management solutions to the residential, mining, telecoms, renewable energy sectors and so much more. Supplying every type of battery for every type of application.



**FIRST NATIONAL BATTERY (Pty) Ltd**

+27 11 741 3600

64 Liverpool Road,  
Benoni South Industrial Sites,  
Benoni, 1502,  
South Africa

[marketing@battery.co.za](mailto:marketing@battery.co.za)

[www.battery.co.za](http://www.battery.co.za)

First National Battery Mining Batteries have been designed for harsh underground mining conditions and are used by major mining groups throughout Africa including platinum, gold, diamonds, coal, uranium, copper, iron as well as antimony. Our mining batteries are used in several different applications including mining locomotives, miner's cap lamp, drill rig machines, scoop batteries and hauler batteries. First National Battery offers an optional battery filling system which assists users in ensuring all battery cells are filled to the correct levels.



## HELLA FLEXATEC LED STRIP LIGHT

The importance of high visibility on the mine site is critical to any mining operations to maintain a safe working environment. Established in 1899, HELLA is proud to introduce the next step of innovative mine lighting.

HELLA FlexaTec ensures homogeneous illumination of the working environment. Available as 110V and 230V AC versions and with a colour temperature of 5,000 Kelvin, the FlexaTec light is also very similar to daylight. The flexible LED light strip from HELLA, designed for mining and other industrial applications is available in 10m lengths that can be interlinked and lock into place via plug and socket end clips, up to a length of 100m from one power source. Installation is easy, thanks to the specially designed clips.

FlexaTec is the perfect lighting solution for underground mining environments.

FOR MORE INFORMATION PLEASE CONTACT



37 Josiah Chinamano Rd, BULAWAYO  
[secretary@minemachines.co.zw](mailto:secretary@minemachines.co.zw) | [sales@minemachines.co.zw](mailto:sales@minemachines.co.zw)  
(+263) 2922-77827 / 79932 or (+263) 772 234345

**OFFICIAL HELLA MINING DISTRIBUTOR IN ZIMBABWE**

[www.hella.com/mining](http://www.hella.com/mining)





Unit G4, Pinelands Office,  
Maxwell Drive,  
Modderfontein,  
1645  
Tel: 011 608 4537 |  
Fax: 086 698 6380  
[www.turnkeyinstruments.co.za](http://www.turnkeyinstruments.co.za)

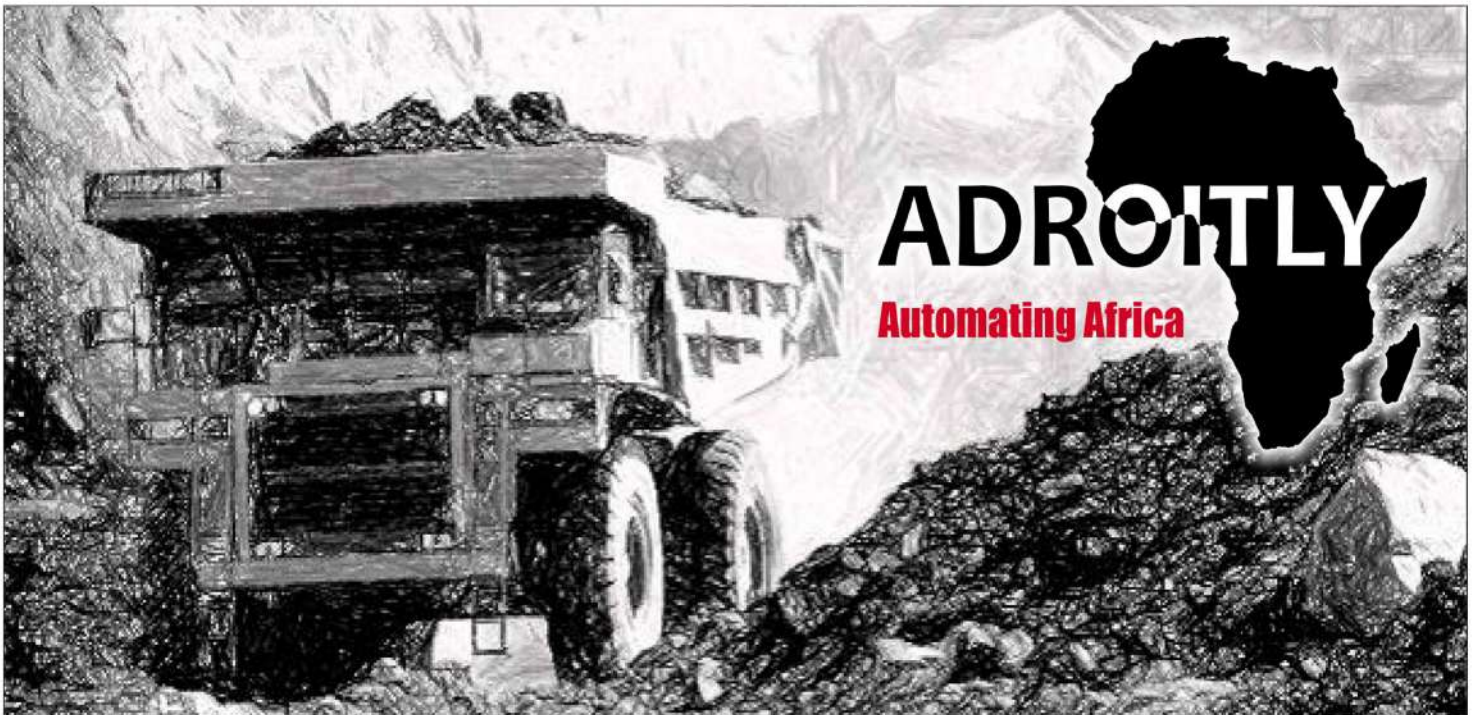
Turnkey Instruments was established in 1997 and offer to the mining and transport sector:  
Quality brake testing instrumentation (SIMRET brake testers)  
Southern Africa's leading brake testing services  
On site consulting  
Sole agents in Africa  
Only calibration lab in Africa



Adroitly Africa

303c Olievenhout Ave,  
North Riding AH,  
Roodepoort,  
2169  
Email: [info@adroitlyafrica.com](mailto:info@adroitlyafrica.com)  
Tel : +27 10 003 1638  
[www.adroitlyafrica.com](http://www.adroitlyafrica.com)

Adroit EMS, Adroit SCADA, Adroit HMI, Adroit SCADA Intelligence, Adroit information portal, Adroit OEM platform, Adroit alarm management, Codra Panorama Historian, HNC Electric Softstarters, CBI low voltage switchgear, Mitsubishi PLC's, Mitsubishi VSD's, Mitsubishi HMI's, Dell hardware, Product training and support, Product engineering support.



**SCADA, PLC's, VSD's and Servo's**

Right quality, right price, right service and right availability

Tel : +27 10 003 1638 | Web : [www.adroitlyafrica.com](http://www.adroitlyafrica.com) | Email : [info@adroitlyafrica.com](mailto:info@adroitlyafrica.com)

# OUR GUMBOOT HERITAGE RUNS DEEP

Wayne products have established themselves as iconic companions in the mining industry, offering hardwearing protection in Africa for even the harshest conditions over almost 8 decades.

We're the largest manufacturer of PVC and PU gumboots in Africa, with over 64 million gumboots having rolled off our production line. If these were to be lined up from heel to toe, they would stretch halfway around the world.

With a comprehensive range of products, offering a variety of safety features, colours, lengths and cuts, Wayne has a gumboot solution to fit your specific needs.



The Wayne logo, featuring the word "WAYNE" in white capital letters inside a blue oval.

To find your nearest  
stockist please email us  
at [info@bbfsafety.com](mailto:info@bbfsafety.com)

Featured Boots: Wayne Egoli 1 and Egoli 2

To view our comprehensive  
range please visit,  
[www.wayne-safety.com](http://www.wayne-safety.com)



## Services

**Custom Build Gear drives**

**Gearbox Overhauls, upgrades and re-builds**

**Consultations & Inspections**

**Field Service & Gearbox Installations**

**Replacement Parts**

**24 Hour Support**

**Flexible in-house Manufacturing Capabilities**

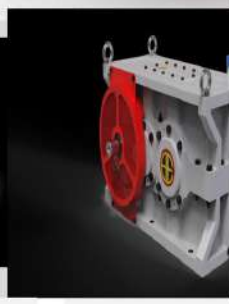
**Over 40 Years experience in manufacturing**



Stacker & Reclaimer Drive



Vertical Mill Drive



Parallel Shaft Gearbox



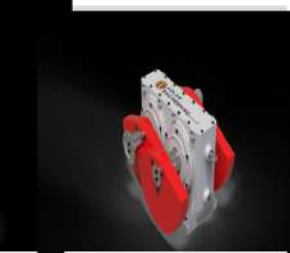
Mill Drive



Worm Drive



Double Helical Mill Drive



Exciter Gearbox



Vertical Rolling Mill Drive



Shuttle Car Wheel Unit



Torque Wrench

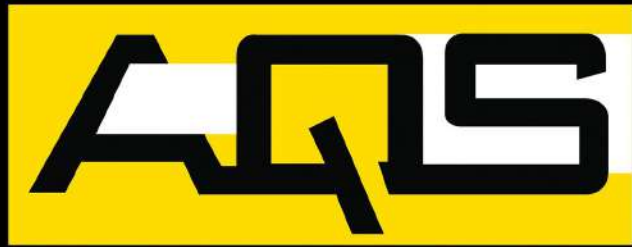


83R Raise Boring Drive



Blast Drill Drive

Member of AxFlow Group



**LIQUID** TRANSFER

**AXFLOW**

*fluidity.nonstop*

**An importer and distributor  
of pumps in Africa.**



**Contact us for any enquiries:**

**AQS Head Office**

Tel: +2712 548 7204

E-mail: [aqsmontana@aqslt.co.za](mailto:aqsmontana@aqslt.co.za)



[www.aqsliquidtransfer.co.za](http://www.aqsliquidtransfer.co.za)



Scan here to get to  
know us

GfG (Pty) Ltd

VAT REGISTRATION NUMBER : 4140110612

PHYSICAL ADDRESS:  
7 VOORTREKKER ROAD  
MINDALORE NORTH  
KRUGERSDORP  
1739

CONTACT DETAILS  
TEL: 011 955 4862  
FAX: 011 955 4741  
E-Mail: [info@gfg.co.za](mailto:info@gfg.co.za)  
Website: [www.gfg.biz](http://www.gfg.biz)

GfG (Pty)Ltd is an acknowledged major world player in the development and sales of personal gas detection instrumentation and fixed gas detection systems.

Our range of products include:

- single- and multi-gas detectors (for oxygen, combustible and toxic gases, and vapours)
- gas leak detectors
- sound level meters
- anemometers
- fixed system controllers and transmitters (for oxygen, combustible and toxic gases and vapours)
- stand-alone systems

**natsu**  
FLOTATION OPTIMISATION

NatSu Africa PBC  
23 Marlborough Drive, Marlborough, Harare, Zimbabwe  
+27 82 800 4435  
WeChat: Gregkruger  
Skype: gregkruger1  
[greg@natsusolutions.com](mailto:greg@natsusolutions.com)  
[www.natsusolutions.com](http://www.natsusolutions.com)

NatSu is a Zimbabwean Company that partners with its clients to maximise their bottom line by providing a complete unique flotation solution for unique challenges. No ore type or mineral too difficult. ▪ manufacture own chemicals ▪ independent testwork ▪ process improvements ▪ plant optimization ▪ improve working capital ▪Products include: frothers, collectors: primary and secondary, depressants, Ph modifiers and flocculants

**KOMATSU**



**Providing quality and reliable products, service and solutions to the underground mining industry.**

Komatsu is an indispensable partner to the mining industry that maximizes value for customers through innovative solutions. With a full line of products we help customers safely and sustainably optimize their operations. Our Komatsu, P&H, Joy and Montabert equipment and services are used to extract fundamental minerals and develop modern infrastructure.

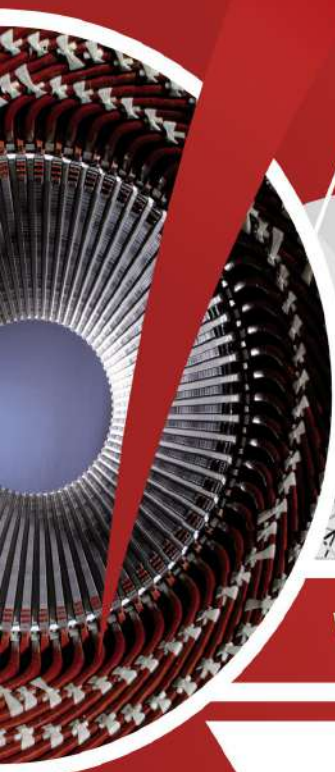
12 Commercial road, Wadeville, Germiston, South Africa  
+27 11 872 4000 | [info@joyglobal.com](mailto:info@joyglobal.com)



[www.mining.komatsu](http://www.mining.komatsu)

Trademarks and service marks used herein are the property of Komatsu Ltd., Komatsu Mining Corp., or their respective owners or licensees.

# Your technology solutions provider!



## Wilec Brands, Manufactured and Supplied in Africa for Africa



Quality bearings manufactured for the mining industry



Industrial tapes manufactured for all industries



Winding wires manufactured to SABS and IEC Quality Standards

### PRODUCT RANGE

#### MECHANICAL

- Bearings
- Plummer Blocks
- Chains
- Seals

#### ELECTRICAL

- Enamel & Covered Conductors
- Insulation Materials
- Process & Test Equipment
- Resin & Varnishes
- Transformer Products

#### INDUSTRIAL

- Signage & Graphics
- Extension Reels
- Tapes



A division of ACTOM (Pty) Ltd

## 08611WILEC

exportsales@wilec.co.za  
www.wilec.co.za



Zimbabwe Official Distributor

00263 (4) 751114/7  
0263 77 4036 287

marketing@powerspeed.co.zw



## **WearCheck Zimbabwe**

**A:** 23 Amby Drive, Msasa, Harare

**T:** +263 (242) 446 369 / 73 / 72

**E:** [evanm@wearcheck.co.za](mailto:evanm@wearcheck.co.za)

or [shesbyc@wearcheck.co.zw](mailto:shesbyc@wearcheck.co.zw)

### PRODUCTS & SERVICES INFO:

WearCheck's primary goal is to help customers save money and time via a convenient "one-stop-shop", offering the full spectrum of reliability solutions for getting plant to perform at its peak. As well as traditional used oil analysis, WearCheck Zimbabwe also conducts thermography, vibration analysis, balancing, laser alignment, motor current analysis and milling.

WearCheck Zimbabwe provides a 24-hour sample turnaround time for used oil samples and offers an on-site sampling service, if needed.

Using these preventive maintenance tools substantially reduces the chances of a machine failing without warning, which can often have a catastrophic impact on a production line, while repairs are carried out and spare parts are ordered.

The Zimbabwean industries that are currently benefiting from WearCheck's condition monitoring services include: mining, earth-moving, agriculture, manufacturing, power generation, aviation and construction.

WearCheck has a network of 16 strategically-placed laboratories in nine countries around Africa and beyond. The labs are positioned to boost the accessibility of reliability solutions services to industries around the continent, often in areas where infrastructure is limited.

WearCheck Zimbabwe was formed in 2016, after WearCheck acquired the long-established Tribology Services oil analysis laboratory in Harare.

**Released on behalf of WearCheck by Sharon Fay Public Relations**

**Media queries: Sharon 082 8230539 or [sharon@sharonfaypr.co.za](mailto:sharon@sharonfaypr.co.za)**

**RWW ENGINEERING (PTY) LTD**

Reg. No. 1986/004209/07

**PRODUCTS AND SERVICES OFFERED**

- Low Voltage motor control panels.
- Medium Voltage motor starting panels.
- MV Variable frequency drives for mills, pumps & fans (Ingeteam).
- Liquid resistance motor starters (LRS) for slip ring motors.
- LV & MV Power Factor Correction capacitors and harmonic filter equipment.
- Power quality & Active Harmonic Filters.
- Static VAR Compensators (SVC) and Static Synchronous Condenser (Statcom)
- MV switchgear and circuit breakers (Schneider Electric).
- Noja Power Auto Reclosers
- Containerized & skid mount substations.

1047 Schooner Avenue, Laser Park, Johannesburg

PO Box 3180, Honeydew. 2040

T: +27 11 433 8003 F: +27 11 433 8011

sales@rww.co.za

- **Pepperl+Fuchs (Pty) Ltd**  
 1st floor Zerwick Forum  
 8 Glen Eagle Office Park  
 Cnr Monument and Braambos street  
 Glen Erasmia  
 Kempton Park  
 1619  
 South Africa  
 T. +27 (0)87 985 0797  
 F. +27 (0)86 756 8741  
 Email: [Info@za.pepperl-fuchs.com](mailto:Info@za.pepperl-fuchs.com)  
 Website: [www.pepperl-fuchs.co.za](http://www.pepperl-fuchs.co.za)



**As a well-known global supplier of mining equipment, METQ specialises in:**

- Professional test facilities to determine feasibility and/or to improve recovery & efficient wash plants
- Design of new plant & suggested process flows to optimise quality and profitability
- Building and erection of complete new mineral processing plants;
- Commissioning of plants to optimize recovery
- Large range of spirals to suit your specific needs;
- R&D department for new innovations & designs



**Typical Applications:**

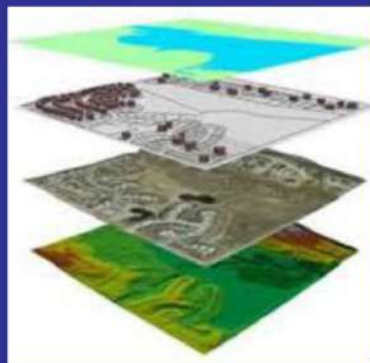
- Coal
- Gold - alluvial or free
- Mineral sands - rutile, zircon, ilmenite
- Tungsten
- Silica sand
- Chromite
- Tin
- Iron
- Carbon - chips or slime
- Alumina silicate
- Soil cleaning
- Sulphides
- Copper
- Magnetite



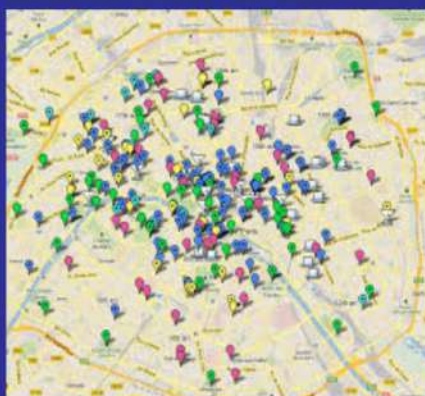
**Survey Equipment**



**Satellite Images**



**GIS Consultancy**



**Points of Interest**



**Topographical Surveys**



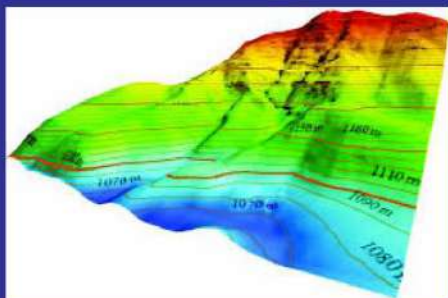
**Environmental Impact Assessment**



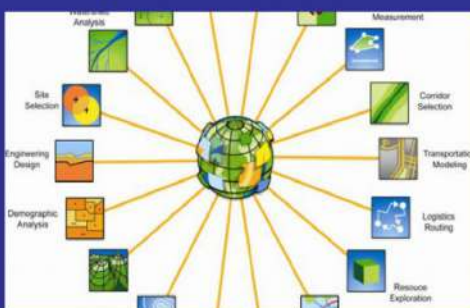
**Engineering Surveys**



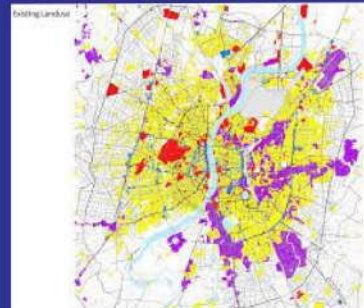
**MapInfo Software**



**Mapping Analysis**



**GIS & Software Training**



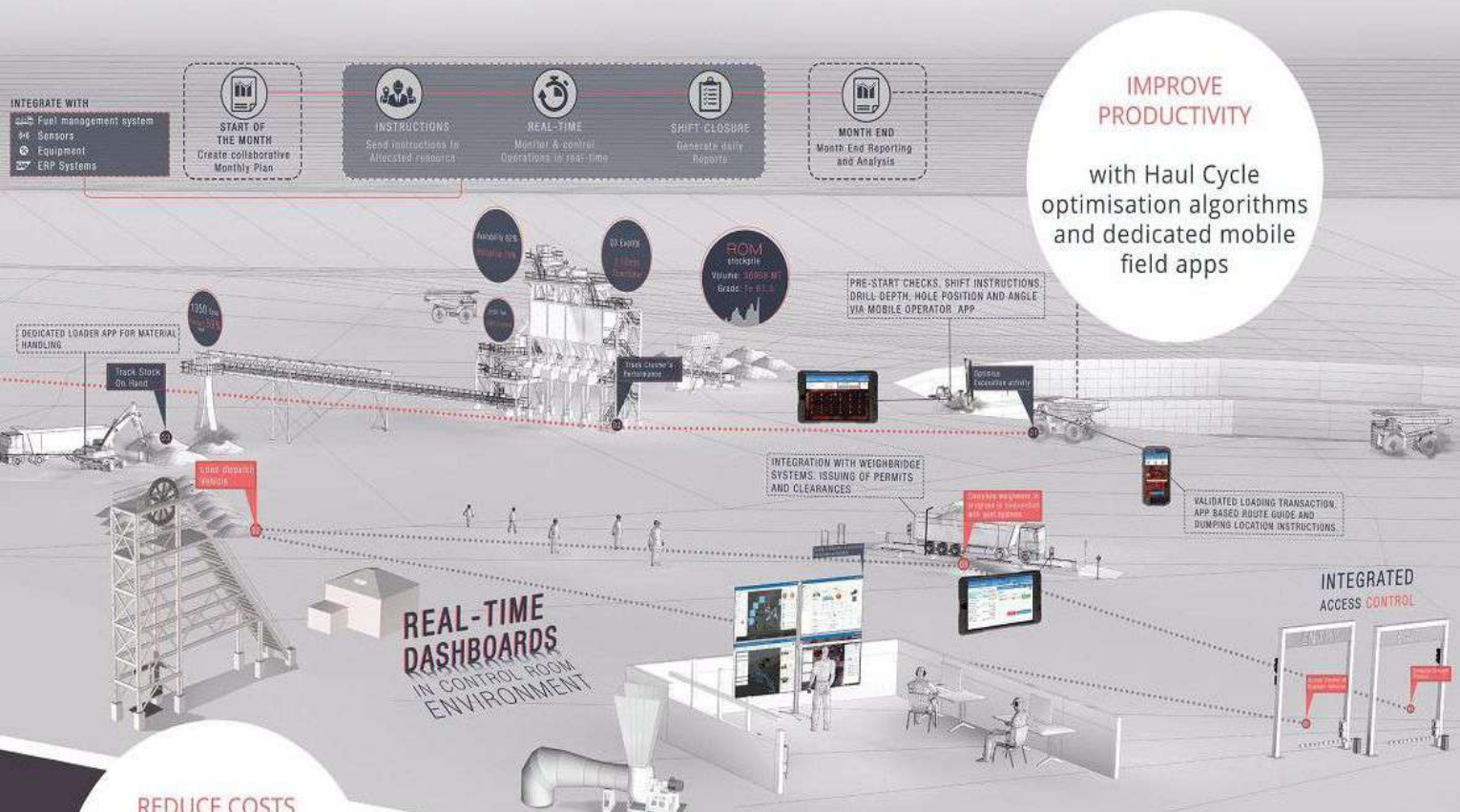
**Land Consultancy**

**Contacts : +2634 783 044/50 / +263 777 313 634 / +263 712 778 393**

**geosmattpl@gmail.com**

# DIGITALLY TRANSFORM YOUR MINING OPERATIONS

Reactore: Software and technology solutions for enhanced mining operational management

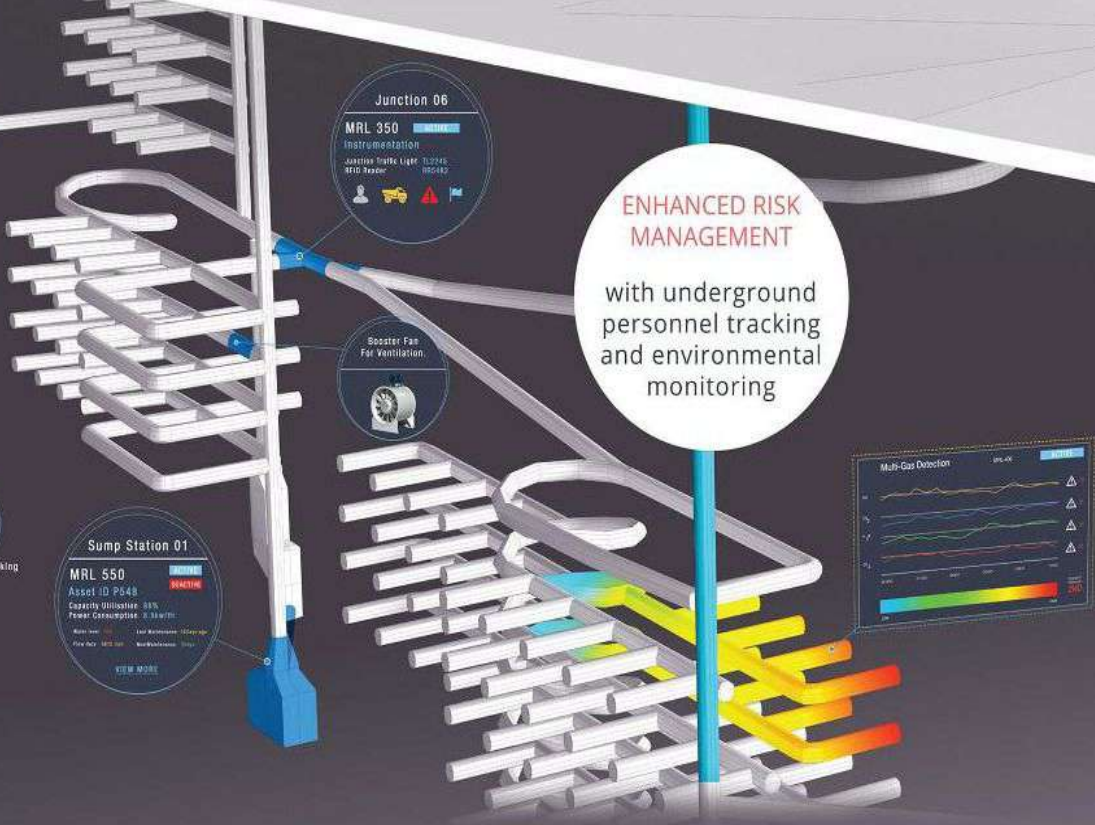


**IMPROVE PRODUCTIVITY**  
with Haul Cycle optimisation algorithms and dedicated mobile field apps

**REDUCE COSTS**  
by increasing equipment availability and utilisation with real-time condition based monitoring maintenance

**ENHANCED RISK MANAGEMENT**  
with underground personnel tracking and environmental monitoring

## UNDERGROUND MINING DIGITALISATION SOLUTIONS



## SOFTWARE TECHNOLOGY SOLUTIONS FOR THE ENTIRE MINING VALUE CHAIN





# Shaped for women who shape the world

For women in industry, the right safety footwear can help conquer the greatest hazard, but there is no one-size-fits-all when it comes to their safety footwear needs. This is why choice is essential. At SISI, we offer 14 styles of safety shoes, extending across 3 sole shapes, tailored for women with narrow, medium and wide-shaped feet. Our range explores new footwear styles, colours, finishes and of course, comfort... all because we're honoured to have women who shape the world walk in SISI shoes.



[www.sisi.co.za](http://www.sisi.co.za)





# TEKTOWER

Cooling Tower Specialists

a Member of the IWC Group

Industrial Water Cooling (Pty) Ltd

+27 11 466 0699

[www.iwc.co.za](http://www.iwc.co.za)

[info@iwc.co.za](mailto:info@iwc.co.za)

Tektower has over 14 500 cooling towers in operation across the African continent. Designed to be robust and durable enough to withstand the harsh African climate, Tektower cooling towers have truly stood the test of time. Tektower offers a comprehensive range of package and modular cooling towers.



MBE Minerals SA Pty Ltd

## MBE MINERALS

Suppliers of:

- HPGR
- Palla Mill
- Pneufлот
- Batac Jig
- Romjig
- Teska DMS separator
- Jones WHIMS
- Permos magnets
- Screens

+ 27 11 397 4660

+ 27 11 397 4411

+27 84 501 5502

P O Box 8460, Elandsfontein, 1406

36 Wankel Street, Jet Park, Boksburg, 1459, Gauteng, South Africa

[jkottmann@mbe-minerals.co.za](mailto:jkottmann@mbe-minerals.co.za)

[www.mbe-cmt.com](http://www.mbe-cmt.com)



*We partner with mines to maximise the bottom line*

**Complete solution provider to the mineral flotation process industry to help reduce \$ per tonne treated**

**Our capabilities:**

- Manufacturer of bespoke chemicals
- Independent test-work
- Process improvements
- Plant optimization
- Improving working capital cashflow and profits

**Products**

Flotation Reagents

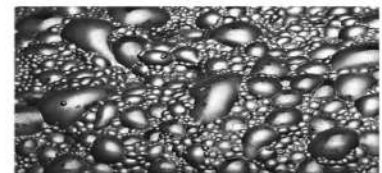
Flocculants

- Anionic
- Cationic
- Non-Ionic

**Manufacture a full range of:**

- Frothers
- Collectors: Primary and secondary
- Depressants
- Ph Modifiers
- Flocculants

For: gold, platinum, copper, cobalt, nickel, zinc, lead, uranium, lithium, coal, sulphide ores, oxide ores, mixed ores



NatSu Africa PBC is a Zimbabwean Company that analyses, designs, tests, manufactures, implements, supplies and supports unique solutions for unique challenges. Contact Greg Kruger today and find out how we can assist you with your individual needs.



[greg@natusolutions.com](mailto:greg@natusolutions.com)



[www.natusolutions.com](http://www.natusolutions.com)



+27 82 800 4435

Address: 23 Marlborough Drive, Marlborough, Harare, Zimbabwe

Wilec, a division of Actom (Pty) Ltd, was established in 1953, and consists of 2 operating divisions, Electrical and Industrial. We are technical solutions providers to a diverse range of industries, with products stocked in 5 major distribution centres in South Africa. The manufacturing site in Olifantsfontein and the distribution centres in Johannesburg, Cape Town, Durban and Middleburg are all ISO 9001:2008 certified, and in-house converting facilities include slitting of adhesive and non-adhesive tapes, CNC machining, and manufacture of custom-designed kits. A talented team of product specialists ensures that customers have technical application support, and provides access to the latest technology through partnerships with leading global manufacturers.

## ELECTRICAL DIVISION

### COPPER PRODUCTS

- Round and rectangular magnet wire
  - Polyurethane (PU), Armoured Polyesterimide (API) and inverter grade enamels
- Covered conductor
  - Nomex®, kraft paper, polyimide film, mica, PETP film and glass
- Earthing strip

### INSULATING MATERIALS AND ANCILLARY PRODUCTS

- Flexible insulation
  - Films, tapes and laminates for rotating machines and dry-type transformers
- Rigid laminates
  - Epoxy and polyester glass, phenolic paper and fabric, machined to requirements
- Resins and varnishes
  - Epoxy and polyester resins, solvent-based varnishes
- Cables
  - Specialised cables for motor, transportation and construction applications
- Test and process equipment
  - Surge testing and condition monitoring equipment, VPI plants



**08611WILEC**

A division of ACTOM (Pty) Ltd

Johannesburg (Head Office) +27 (0)11 629 9300 Durban +27 (0)31 569 4883

Cape Town +27 (0)21 556 5720 Middelburg +27 (0)13 246 2330/1

Pietermaritzburg +27 (0)33 345 0264 sales@wilec.co.za www.wilec.co.za



**Geosmatt P/L**

164 The Chase Road  
 Mount Pleasant  
 Harare  
 Zimbabwe  
 +263 4 783 044/50  
 +263 777 313 634  
 +263 712 778 393  
[geosmattpl@gmail.com](mailto:geosmattpl@gmail.com)

Our services include; Surpac Surveying Software, MapInfo Professional GIS Software, Topographical and Engineering Surveying, GIS Consultancy, Surveying and GIS Equipment, GIS Training, POI Mapping, Primary Data Mapping, Land Consultancy.



**Contact Details**

**Sales Director:** Piet Du Preez  
 Cellphone: +27 83 638 0382  
 Work Phone: +27 13 246 9170  
 Email: [pietdp@thosbegbie.com](mailto:pietdp@thosbegbie.com)

**In-house non-destructive testing capabilities and services include:**

- Computer-aided design and drawing office
  - Pattern shop and tooling manufacturing
  - Solidification and methoding expertise
  - Pipe and tube manipulation and coil fabrication
  - General fabrication and speciality welding
  - Laboratory with Wet-Chem and metallurgical chemical analysis
  - Modern Fettling and sand-blasting plant
  - Flaw-detection analysis using X-ray, ultrasound, infrared thermal imaging
  - Mechanical properties pressure and flow-rate testing
- (This range of NDT testing facilities is unique among competitors worldwide)



**TRANSFORMER MATERIALS AND COMPONENTS**

- Raw material, components and kits for distribution and power transformers
- Auxiliary products
  - Buchholz relays, pressure relief valves, temperature indicators and tap-changers

**BEARINGS & ANCILLARY PRODUCTS**

- FAG ball and roller bearings for rotating machines
- KBF bearings for bulk handling, mining equipment, agricultural and general industries

**INDUSTRIAL DIVISION**

**AVAST™ SELF ADHESIVE TAPES**

- Avast™ packaging tape, masking tape, duct tape, insulation tape and double sided tape
- Bag-sealing & tamper evident tapes, autoclave tape, protection films, sign vinyl, vehicle wrap films, digital print & heat transfer media for the security, healthcare, pharmaceutical, automotive, retail, sports & fashion-wear and signage markets



*The chemical people*

# YOUR LEADING SUPPLIER OF QUALITY MINING CHEMICALS



**CAUSTIC SODA**



**MINING EXPLOSIVES**



**NITRIC ACID**

SODIUM CYANIDE 50KG

CAUSTIC SODA 25KG

ACTIVATED CARBON 25KG (6"12)

ACTIVATED CARBON 25KG (8"12)

BORAX ANHYDRIDE 25KG

HYDROGEN PEROXIDE 30KG

SULPHURIC ACID 40KG

NITRIC ACID 34 KG

HYDROCHLORIC ACID

HYDRATED LIME 25KG

ZINC DUST 25KG

LEAD NITRATE 25

**CONTACT US FOR MORE INFO:**

# 086 770 07179

**1 ROBERT DRIVE,  
MSASA HARARE**

077 614 9269  
077 663 3237  
077 497 0180

**SPLASH PLASTICS,  
109GEORGE AVE,  
GHEGUTU**

077 233 8692

**28 JOSIAH  
CHINAMANO ROAD  
BELMONT, BULAWAYO**

077 215 6295  
078 218 0546

**2101 BRISTOL ROAD  
HEAVY INDUSTRIAL AREA  
GWERU**

078 433 9912  
077 161 1796



**Prestolite / Leece-Neville** Heavy Duty starters and alternators are manufactured to stringent ISO9001 specifications and are supplied to OEM manufactures and OE after market for most Heavy Duty manufactures of yellow metal equipment - CAT, Cummins, Terex, Liebherr, Perkins, MTU, Komatsu, Bell, Hitachi, John -Deere, Perkins, etc.

**Shelhurst Components Pty (Ltd)** is the master importer of **Prestolite / Leece-Neville** in Southern Africa and stock and sell a full range of heavy-duty starters and alternators that are drop-in replacement for most mining applications. Shelhurst Components specialise in assisting mining fleet operators with the correct power application for the toughest jobs. Starters up to 12kw/24Vlt and Alternators from 100Amp/12vlt to 600Amp/24Vlt - all genuine **Prestolite/Leece-Neville**.

#### **Why upgrade to Prestolite / Leece- Neville?**

Mining machinery operates under some of the harshest conditions on our planet. Excessive heat, humidity, dust, mud, vibration 24/7 demanding a much higher level of performance and reliability than normal commercial vehicles and machinery. To function under these tough and arduous conditions. Alternators and Starter Motors have to be designed and developed with absolute reliability in mind. Prestolite /Leece-Neville test each and every product supplied to OEMs and Mining Fleet operators on mines from Russia to Australia testing year in and year out to achieve utmost reliability and performance in conditions from -40 to +105C.

**Prestolite/Leece-Neville** - New range of gear reduction **7.5kw and 12Kw 24Vlt M105 and M128R** gear reduction Starter Motors outperform the competition in some cases by double the normal duty cycles. These high torque starters are now OEM fitment to many of the major OEM yellow metal engine manufactures operating in the mining environment.

**Replacing** - 39MT/42MT and 50MT starters.

**Prestolite/Leece-Neville** - **BLD/BLP** 24vlt brushless alternators are powerful and efficient at low rpms where extra charging is most needed. These alternators are the most compact and durable in their respective class. 140Amp/275Amp/600Amp 24Vlt offer reliability up to 105C temperature exceeding normal duty cycles currently experienced on mines in Australia and South America.

**Replacing** - 30Si/33Si/36Si and 55Si alternators.

**Selhurst Components Pty Ltd** also stock a range of Heavy-duty **Prestolite/Leece-Neville** Alternators and Starter motors for **Commercial Vehicle applications** – Mercedes/MAN/Scania Volvo, DAF, Iveco, ERF, Renault, VW, etc .

Reduce your expensive premature vehicle downtimes due to Starter and Alternator failure, fit **Prestolite/Leece Neville** Alternators and Starter Motors to your fleet and extend your machines Duty Cycles.

Contact us with the OEM or OE part no's and Machine applications of the Starters and Alternators you require so we may quote you or direct you to your closest dealer.

For any enquiry, please visit our web site at [www.shelhurst.co.za](http://www.shelhurst.co.za) or contact Ray on +27 11 7952130/ +27 826572022 or Jesse on +27 780057255 or send your queries to - [info@shelhurst.co.za](mailto:info@shelhurst.co.za) / [sales@shelhurst.co.za](mailto:sales@shelhurst.co.za)

**Ultimate Power...**



**...For The Toughest Jobs**  
**OE Quality Heavy Duty Starters**  
**and Alternators**



**M105R3031SE**

- 24V 7.5kW 12Teeth
- Replacing Bell ADT / B40D

**M105R3502SE**

- 24V 7.5kW 11Teeth
- Replacing 39MT / 42MT



The Probe Mining Group of companies has evolved to offer a comprehensive, strategic array of best-of-breed technologies, products, and solutions that significantly improve the design of digital mines and data analysis through end-to-end Digital Mine Operation Solutions. Our integrated offering incorporates Operation Level 9 collision avoidance systems, the design and manufacture of safety solutions, air quality and gas monitoring, renewable energy, industrial solutions, air power, and other specialised solutions. We further provide auto electrical field services, batteries, spares & parts for off-highway vehicles (OHV) spares related to Komatsu drive systems, OEM harness manufacturing and Electrical Vehicle conversions.

**AUTOMOTIVE SOLUTIONS** - We offer a complete range of multipurpose and deep cycle batteries for all commercial and industrial applications, including marine, camping, uninterrupted power supplies (UPS), back-up power, solar, and solutions for telecommunication stations and energy lighting. This series includes lead calcium "wet plate type", tubular, AGM, GEL and Lithium-ion Phosphate technologies that cater for various deep cycle applications.

**INTEGRATED MINING TECHNOLOGY SOLUTIONS** - We focus on providing integrated solutions and transformation processes in the mining sector. Our investment in new technologies delivers secure and out-of-the-box solutions, including uptime and remote monitoring, for a more efficient and accurate exploration of operations. We capitalise on the potential of technologies, including the Internet of Things (IoT), big data and cloud computing to transform operations, better positioning mines to be able to address resource challenges and environmental pressures moving forward. Our intelligent systems combine technology, people, and processes to enable feedback loops, defining an organisation's competitiveness and ability to change the industry landscape. We design and manufacture custom solutions with our customer to overcome all the mining, construction, agriculture, marine and industrial sectors challenges.

**INDUSTRIAL TECHNOLOGIES SOLUTIONS** - We specialise in pneumatic brakes and clutches, industrial gearboxes, electric motors, bearings, as well as other related power transmission products servicing the industrial, mining, and marine markets. Fawick South Africa has been in operation for more than 30 years and is constantly expanding their product range. Through providing quality air, power, safety and energy solutions to industrial clients – we combine optimal performance with huge energy saving benefits. Not only do we offer strong aftermarket service and support, always including expert service technicians and ensuring the availability of spares, but we are also able to conduct air audits and air compressor assessments to ensure that the best products are selected for specific applications.

**RENEWABLE ENERGY SOLUTIONS** - We offer a dynamic selection of carefully sourced energy-relevant products and solutions from top global brands, as well as our own ProbeEnergy product range. Our offer is aligned with our mission to make world-class energy solutions accessible in Southern Africa. There is a huge need in the market for high quality yet affordable energy solutions for solar applications, particularly lithium-ion phosphate batteries, capacitor batteries, chargers and conversions - which have historically been very expensive. We're focused on offering the range, expertise and advice that mining, industrial and domestic users need to revolutionise their energy sources. ProbeEnergy further offers power solutions for a wide range of applications, including solar and backup, UPS, industrial, marine, telecommunications, heavy and light duty automotive, including conversions from diesel to Electrical Vehicle & charging systems.

**SUSTAINABILITY**

The Probe Mining Group of Companies views environmental practices as a central component of all planning and development. As an evolved mining organisation focused on social, environmental and economic sustainability guidance, we are proud partners of the Mandela Mining Precinct on The Real-Time Information Management Systems (RTIMS) research programme, which aims to improve data sourcing, transmission, storage, dissemination, information management tools, practices, and procedures for mines.

**EXCELLENCE THROUGH INTEGRATION**

All Probe Mining Group products and solutions are proven class leaders within the mining, construction, agriculture, marine and industrial sectors industry. Combined with the Gold Standard of professional installation and rigorous maintenance, our offering ensures that uptime for our clients remains well within the desired targets. We partner with our customers to deliver products and solutions that will improve productivity and safety by meeting their specific requirements. Ultimately, this reduces the Total Cost of Ownership for our customers.

**PROBE IMT OFFICES**

**NATIONAL**  
+27 (0) 86 111 3507

**WEBSITE**  
www.imtmining.co.za

**JOHANNESBURG (HQ)**  
Tel: +27 (0) 11 453 0924

**CAPE TOWN**  
Tel: +27 (0) 21 981 9287

**RUSTENBURG**  
Tel: +27 (0) 82 613 1644

**MUSINA**  
Tel: +27 (0) 72 577 8309

**MOKOPANE**  
Tel: +27 (0) 72 342 9767

**BOTSWANA - GABORONE**  
Tel: +267 7293 7878

**NAMIBIA - WINDHOEK**  
Tel: +264 (0) 811 295 330

**BLOEMFONTEIN**  
Tel: +27 (0) 51 430 8722  
Cell: +27 (0) 82 883 3771

**PORT ELIZABETH**  
Tel: +27 (0) 41 374 4343

**KATHU**  
Tel: +27 (0) 83 259 9163

**KURUMAN**  
Tel: +27 (0) 53 712 2331

**ZAMBIA**  
Tel: +260 (0) 966 994 440  
Tel: +260 (0) 967 377 187

**WITBANK**  
Tel: +27 (0) 13 692 4161  
Cell: +27 (0) 82 461 2239

**DURBAN**  
Tel: +27 (0) 31 705 6050

**SPRINGBOK**  
Tel: +27 (0) 60 986 2709

**LYDENBURG**  
Tel: +27 (0) 13 230 4008  
Cell: +27 (0) 79 897 4091

**MOZAMBIQUE**  
Tel: +258 (0) 84 393 1000  
Cell: +258 (0) 84 389 9698

**FOLLOW US**

